

# Clinical Ophthalmology Rotation

Drs. Bentley, Eaton, McLellan, and Mowat



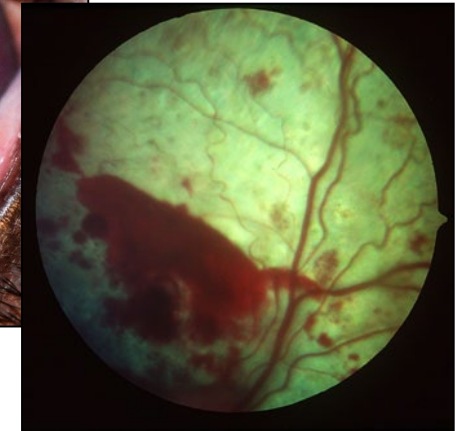
# Clinical Ophthalmology Rotation

- Species emphasis – 80% canine, 8% feline, 7% equine, 5% other (special species, bovine, ovine, caprine, porcine, camelid)
  - If interested in equine/large animal, target late spring, summer, and fall
  - If ophthalmology interest and pursuing internship, target summer/fall of 4th year
- Recommended – **Everyone!**
- General Schedule:
  - Report 7-8am, Dismiss 5:30-6pm (later if ER cases)
- Patient Care:
  - Primarily out-patient but some in-patients likely during the week
- On-call and Weekends:
  - After-hours and weekend on-call required



# Clinical Ophthalmology Rotation

- What do we emphasize?
  - **Examination skills**
  - Basic ophthalmic procedures
  - Describing lesions
  - Problem-oriented approach
- What will you do?
  - Ophthalmic examinations
  - Complete physical examinations
  - Ancillary ophthalmic diagnostic tests
  - Diagnostic and therapeutic procedures (corneal cytology/culture, corneal debridement, anterior stromal puncture for SCCED)
  - General ophthalmic surgery (case-by-case basis)



# Clinical Ophthalmology Rotation

- Organization of Receiving:
  - Receive appointments M, W, F
    - Typically students receive cases in small groups or alone with tech or staff support
  - Surgical procedures T, Th
- Specific Clinic Expectations:
  - Punctuality
  - Thorough clinical histories
  - Completion of history/PE forms
  - SOAPs
  - Communications (as directed)



# Clinical Ophthalmology Rotation

- Preparation expectations:
  - Review your notes from the core third year course for the first week
  - Research topics independently, particularly during the second week
  - Regular case rounds and/or topic rounds
- We want you to understand how to efficiently assess the eye and form a clinical diagnosis.
- We want you to understand what you're treating with and why.



# Questions?

