

Clinical Pathology Elective

Weeks 1-2: 8:00 a.m. – 12:00 p.m.

2 credits

(20-40 students)

Weeks 11-12: 9:45 a.m. – 11:45 a.m.

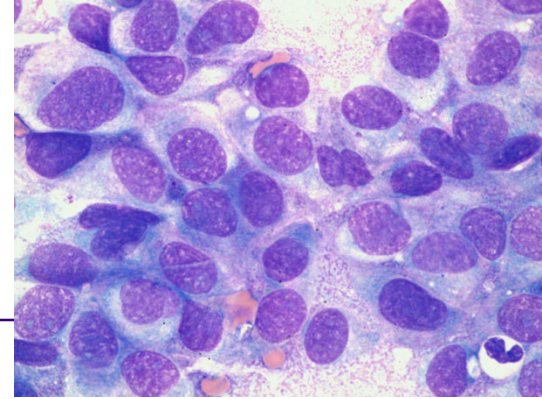
1 credit

(12-20 students)

Class does NOT meet on Memorial Day if it falls in the rotation.

Goals:

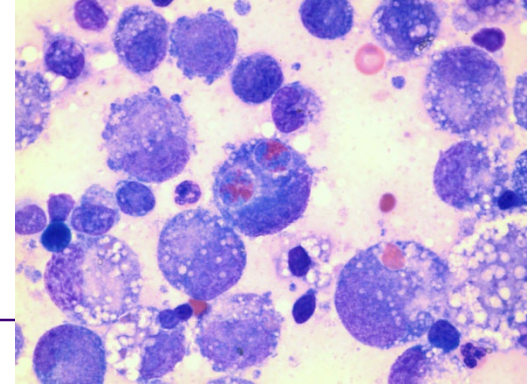
Clinical competencies



Given case data/slides

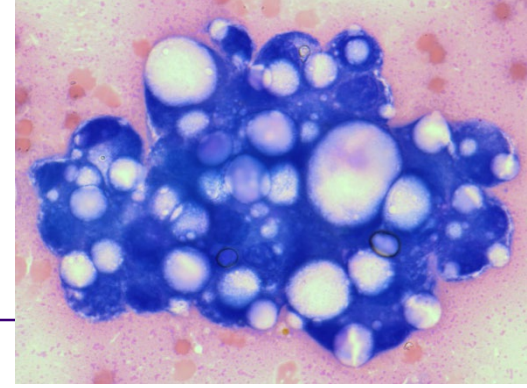
- Develop concise problem list
 - Condense data into major problem(s) relevant to THIS patient
 - Understand pathophysiologic mechanisms
- Develop list of differential diagnosis
- Develop diagnostic plan
- Summarize & communicate cases
- Make mistakes!
 - Recognize, correct & learn from errors

Topics



- **Hematology:** anemia, leukogram, cytopenias
- **Biochemical profiles:** organ function, acid-base, electrolytes, minerals, endocrine
- **Urinalysis**
- **Coagulation**
- **Cytologic evaluation** (fluids, lymph nodes, inflammation, tumors)
- **Other topics**

Materials



- **Case data (canine, feline, bovine, equine)**
- **Multi-headed scope reviews**
- **Microscopic evaluation in pairs**
 - **Glass slides (hematology & cytology)**
 - **Preserved urine sediments**

Expectations

- Arrive on-time
- Prepare for class
- Participate in discussions
- Ask questions early and often!

