

# COPLOW

## The Comparative Ocular Pathology Laboratory of Wisconsin NEWSLETTER

Spring 2024

### Exciting changes coming in 2024!!

We will be phasing out our old pdf submission form and replacing it with a new online submission portal! Our new system, run by Z Rex, will have an online portal through which you will enter patient and case data. This new software will streamline COPLOW's submission process and offer many benefits to you, including the ability to:

- See if a sample has arrived
- Check if a report has been completed
- Look up previously finalized reports from any of your patients at any time
- Upload documents and photos related to your cases
- Create shipping labels (through Z Rex's shipping service)

If you can't wait to get started, please see the last page of the "COPLOW Submission Guidelines" at the end of this newsletter. Otherwise, we plan to start making the transition this summer and will guide you through the transition as you send us cases.

### Price updates (not exciting, but necessary!)

We are working with our UW School of Vet Med Business Services Office on rolling out price increases later this year (date TBD).

### THE COPLOW CREW

**DEPARTURES:** **Kelsey Brakel**, our last fellow, departed in early April 2023 for a new position at Michigan State University.

**Elizabeth Frautschy**, our long-standing lab technician, was admitted to and began veterinary school at the UW School of Veterinary Medicine in September 2023 (though will be back for the summer)!

**NEWCOMERS:** **Jaimie Miller** joined our team as a staff pathologist in May 2023 after working at the National Health Wildlife Center, the Wisconsin Vet Diagnostic Laboratory and UW's School of Vet Med.



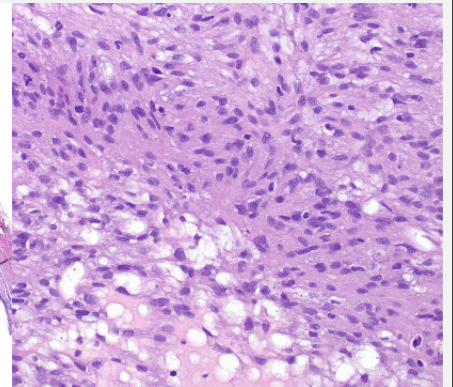
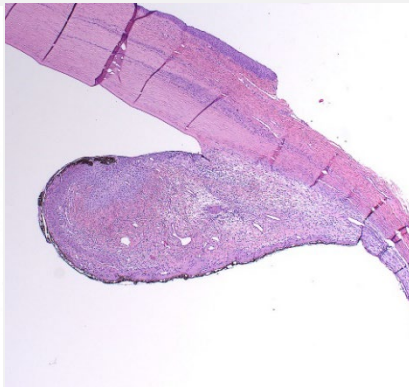
Photo by Riley Aronson, DVM

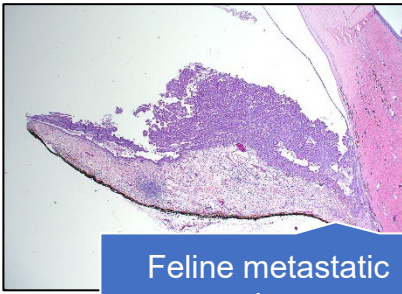
### The COPLOW Lab:

Jaimie Miller, Liam Olds, Dick Dubielzig, Leandro Teixeira  
Heidi Clark, Gillian Shaw, Megan Climans

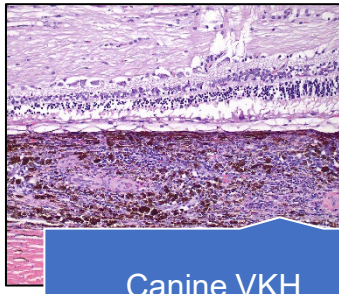
### WHAT'S YOUR DIAGNOSIS?

Adult Siberian husky- Anterior uveal tumor

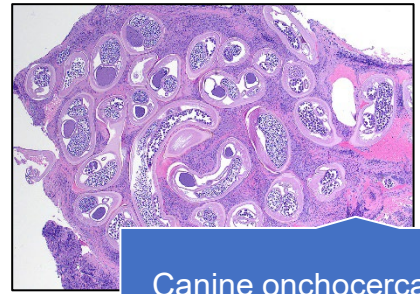




Feline metastatic carcinoma



Canine VKH



Canine onchocerca

### THEN AND NOW: STILL GROWING!

Since our start in 1985, we have received over 100,000 cases!

In 2022, we received ~150 cases per week. In 2023, we received ~175 cases per week (a precipitous increase!).

**This increased case load is evident in a longer turn-around-time than we've ever had before, which is something we're working to improve.**

We hope to hire additional pathology staff to meet the larger number of samples we've been receiving and reduce the completion time.

We thank all our clients who continue to entrust us with their precious pathology samples. If you'd like to discuss cases more in depth, please call (608.263.4958) or email us (coplowfellow@vetmed.wisc.edu).

### COPLOW Rounds:

COPLOW bi-weekly teaching rounds are now open & free for guests every other Wednesday morning. Link to Zoom meeting: [COPLOW rounds](#)

Rounds are recorded each week and are available on our YouTube channel: [COPLOW YouTube channel](#)

### VISIT COPLOW'S WEBSITE!



[www.vetmed.wisc.edu/lab/coplow](http://www.vetmed.wisc.edu/lab/coplow)

We hope that you have perused our web-page! On it, you can find our [latest](#) submission form and instructions on specimen preparation, shipping, pricing and billing.

### STAY CONNECTED! FOLLOW US ON FACEBOOK



Thanks to Dr. Dubielzig, the founder of our lab, we have an active Facebook page with over 9,000 followers! He frequently updates the page with new images of fun, classic, and bizarre diseases as well as some comparative ocular anatomy and species differences.

### WHAT'S YOUR DIAGNOSIS?



#### Uveal schwannoma of blue-eyed dogs

- This is a rare neoplasm that develops in the iris and ciliary body of blue-eyed dogs.
- It causes expansion of the iris that is often interpreted as uveitis.
- It can cause ectropion uveae, which is sometimes interpreted as an iris color change from blue to brown.
- Most of them are benign and enucleation with clean margins is curative.



# COPLOW Submission Guidelines

(more thorough explanations available on our [website](#))

## Shipping:

- USPS, UPS, FedEx accepted
- We don't receive cases on Saturdays
- **Address:**  
COPLOW  
2015 Linden Dr, #3308  
Madison, WI 53706-1102
- Ship in box, NOT envelope
- Put sample jar in one Ziploc bag and the submission form in a **separate** bag in case there is formalin leakage

## Payment:

- You will receive an invoice via email within 4-6 weeks of sample submission
- Pay by check or credit card (using instructions on invoice)

## Turn around time:

- Once received, you will get a report within **5-9 business days** for uncomplicated cases

## Clinical photo submission:

- We love clinical photos!
- Send them with patient's name to: [coplowfellow@vetmed.wisc.edu](mailto:coplowfellow@vetmed.wisc.edu)

## Sample preparation:

- Remove all irrelevant extraocular tissues
  - If tumor present, *describe where it is* and leave all extraocular tissues attached
- Do **not** incise the globe or inject fixative into it
- Fix in 10% neutral buffered formalin (add alcohol during winter to prevent freezing)
- Small samples should be placed into cassettes so we can find them
- Keratectomy and conjunctival samples should be affixed to paper or index card when fresh, then immersion fixed to prevent curling

## Second opinions:

Contact original diagnostic lab and have them send 5 unstained recuts of the slide(s) (\*preferable\*) or send the paraffin block. Please email/fax a completed COPLOW submission form and ideally include the original diagnostic report.

# COPLOW Submission Forms

**Until we completely transition over to our \*NEW\* online submission portal later this year, you will have two options:**

- Please use our regular [submission form](#) when submitting cases,

**OR**

- Try out the new online submission portal!
  - Login to [coplw.zrex.app](http://coplw.zrex.app) and “Create New Account.”
  - Once you have created your account and are logged in, enter your first case in the new portal by clicking on the green “Start New Case” button at the upper right.
  - Fill in the appropriate fields as indicated.
  - Print off the submission form as directed at the end and submit it with the sample as you usually do:
    - You don’t need to send the old version of our submission form
    - Z Rex (the website portal developer) offers shipping through the portal if you would like to use their service
  - If you have questions, please don’t hesitate to view our instructional video and/or contact us:
    - Link to video: [COPLOW Z Rex LIMS Instructions](#)
    - Main lab phone: **(608) 263-4958** (8a-5p, Central Time)
    - Email: [coplwefellow@vetmed.wisc.edu](mailto:coplwefellow@vetmed.wisc.edu)

**One final note:** We are asking for the vigilance and assistance of our clients in providing **fresh (unfixed)** tissues from cases of feline ocular post-traumatic sarcomas (FOPTS). If you suspect FOPTS in a patient, please contact us ASAP to determine if the patient is a good candidate. If so, we will arrange to have the required materials sent to you, *so they arrive on the morning of the scheduled surgery*. How to contact us:

- Main lab phone: **(608) 263-4958** or email: [coplwefellow@vetmed.wisc.edu](mailto:coplwefellow@vetmed.wisc.edu) OR
- Contact Dr. Gillian Shaw (DACVP) directly at [gillian.shaw@wisc.edu](mailto:gillian.shaw@wisc.edu)

What’s in it for you?

- You’ll be helping to advance important research into the genetic abnormalities found in FOPTS **and**
- Your histopathology report will be **FREE!**

Please get in touch with us if you think you can help! Thank you!