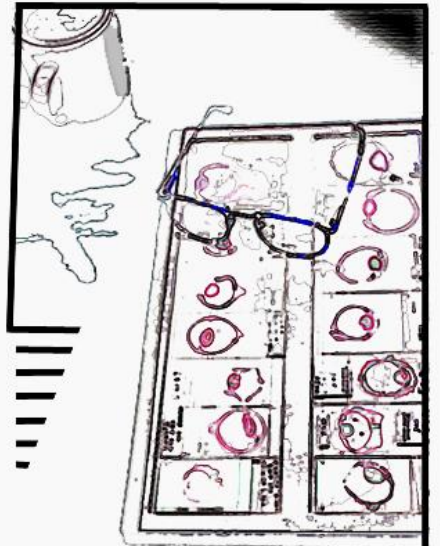


# Canine Miscellaneous Conditions

- Dick Dubielzig



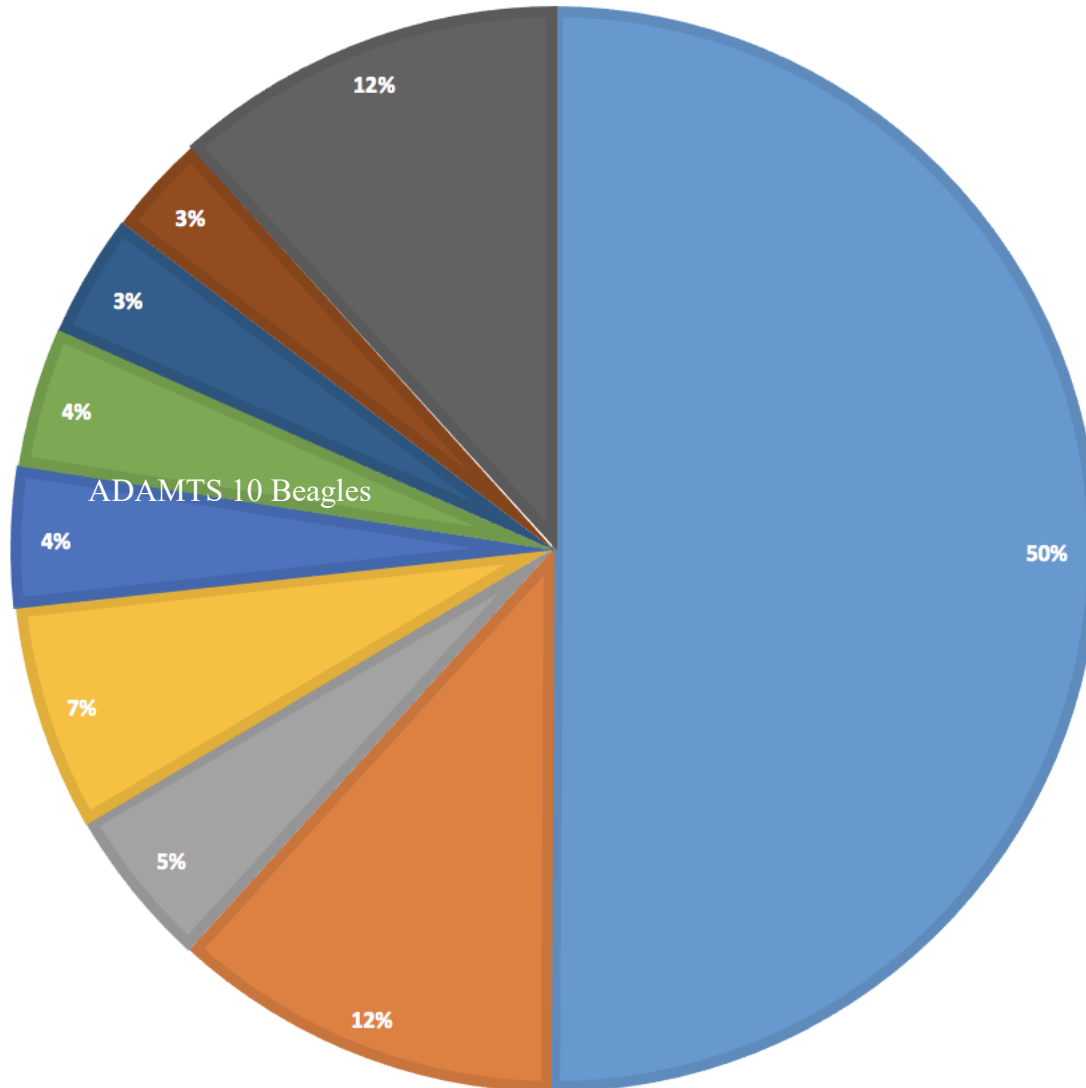
# Miscellaneous Conditions

- **Primary Lens Luxation Glaucoma**
- Thin Walled Iridociliary Cysts (Pigmentary Uveitis)
- Other iridociliary cystic conditions
- Canine Ocular Glivascular Syndrome Melanosis
- Hypertensive Vasculopathy

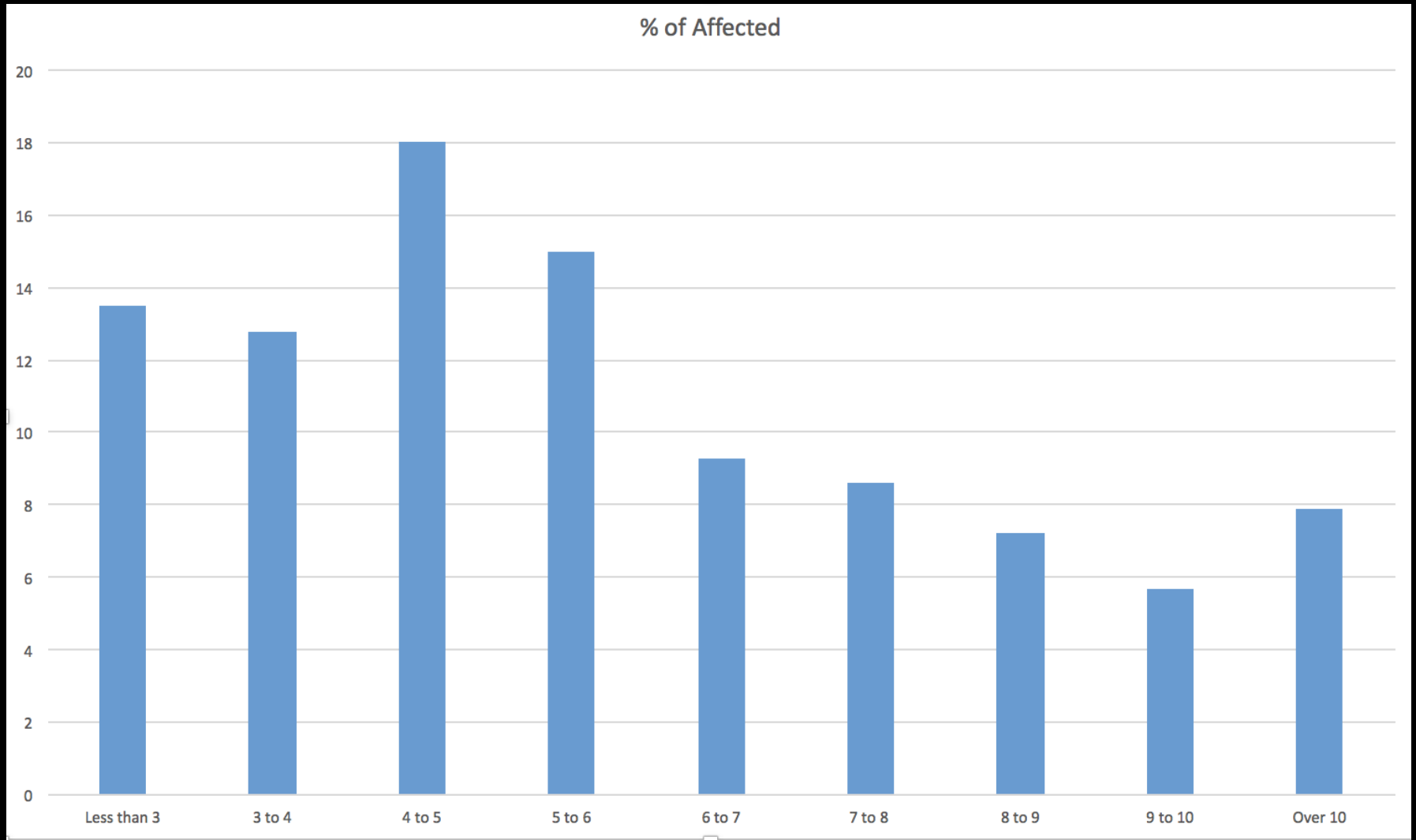
# Primary Lens Luxation Glaucoma

**% OF TOTAL AFFECTED**

JRT Rat Terrier Mixed Breed Aust Cat / Blue Heeler Beagle Chinese Crested Shar-Pei Toy Fox Terrier Others



# Primary Lens Luxation Glaucoma

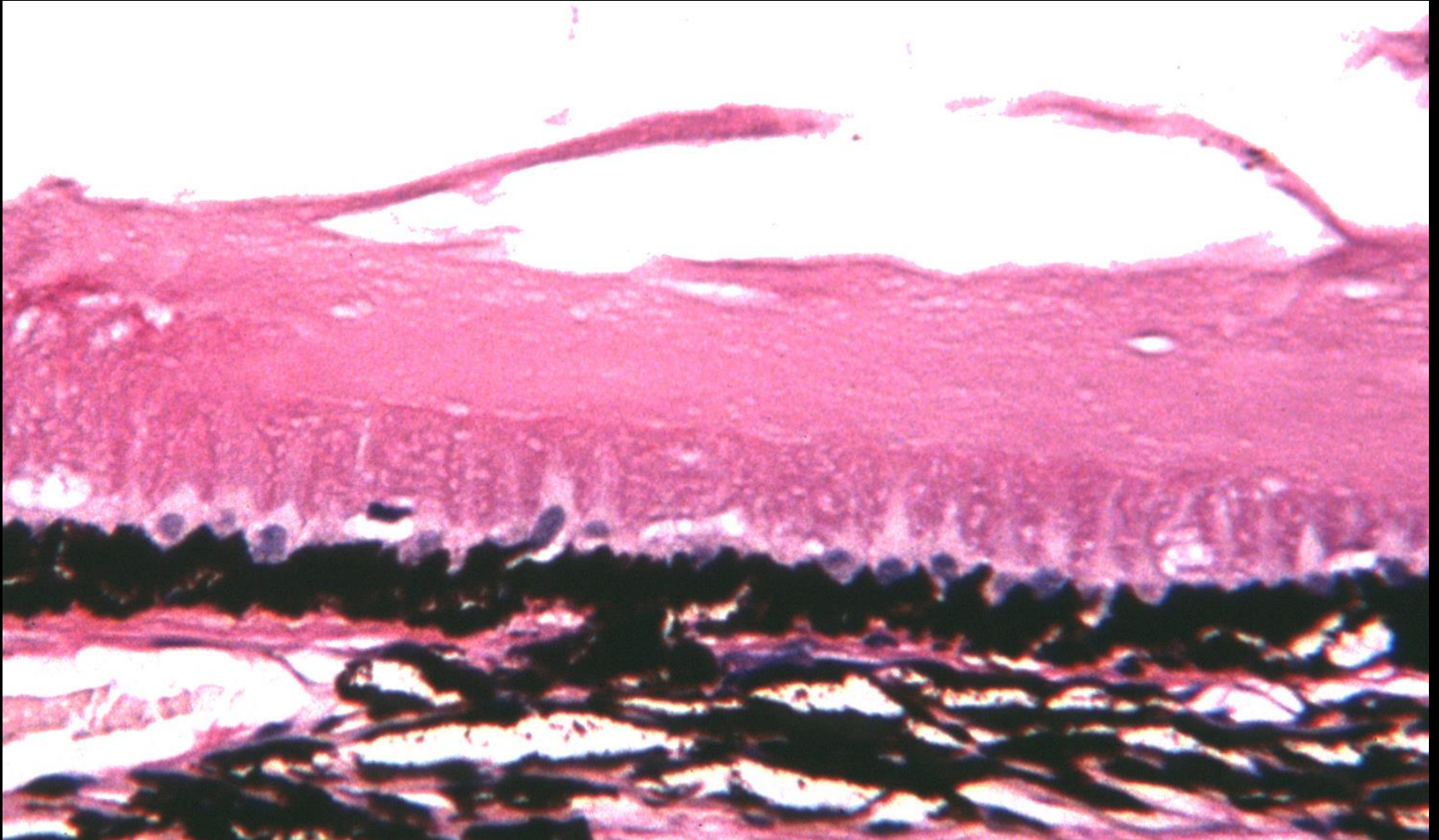


Ages of Dogs at Enucleation

# Primary Lens Luxation Glaucoma

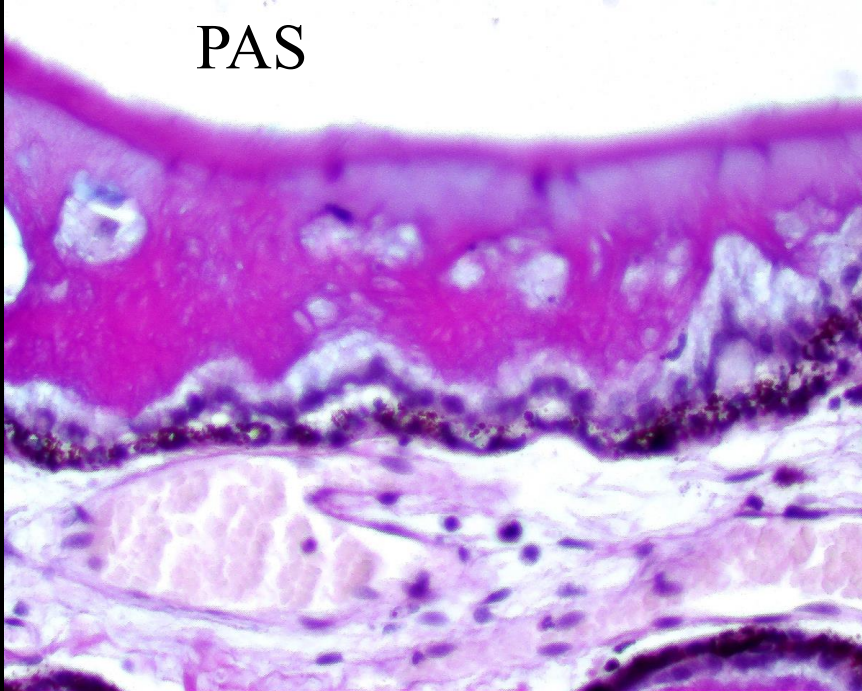


# Primary Lens Luxation Glaucoma



# Primary Lens Luxation Glaucoma

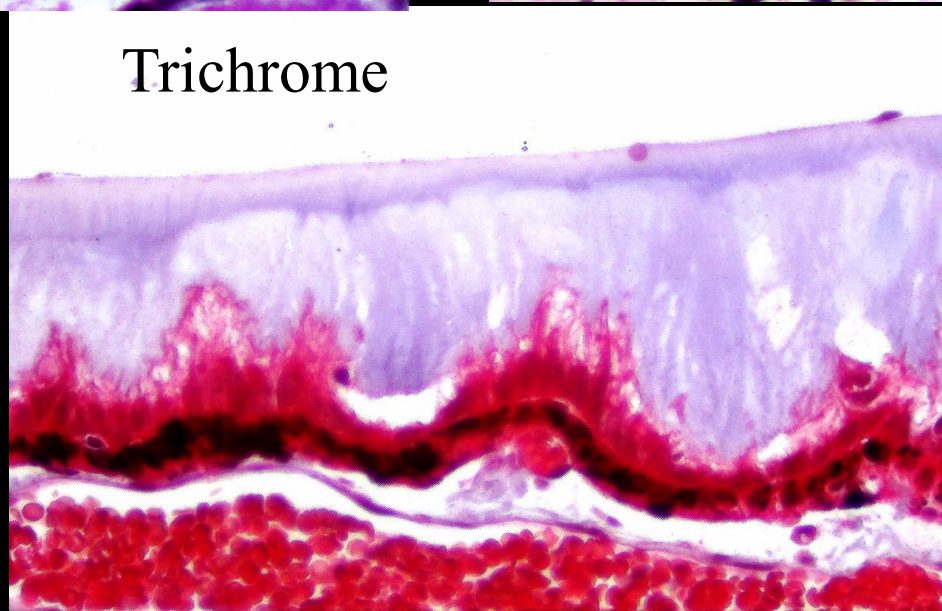
PAS



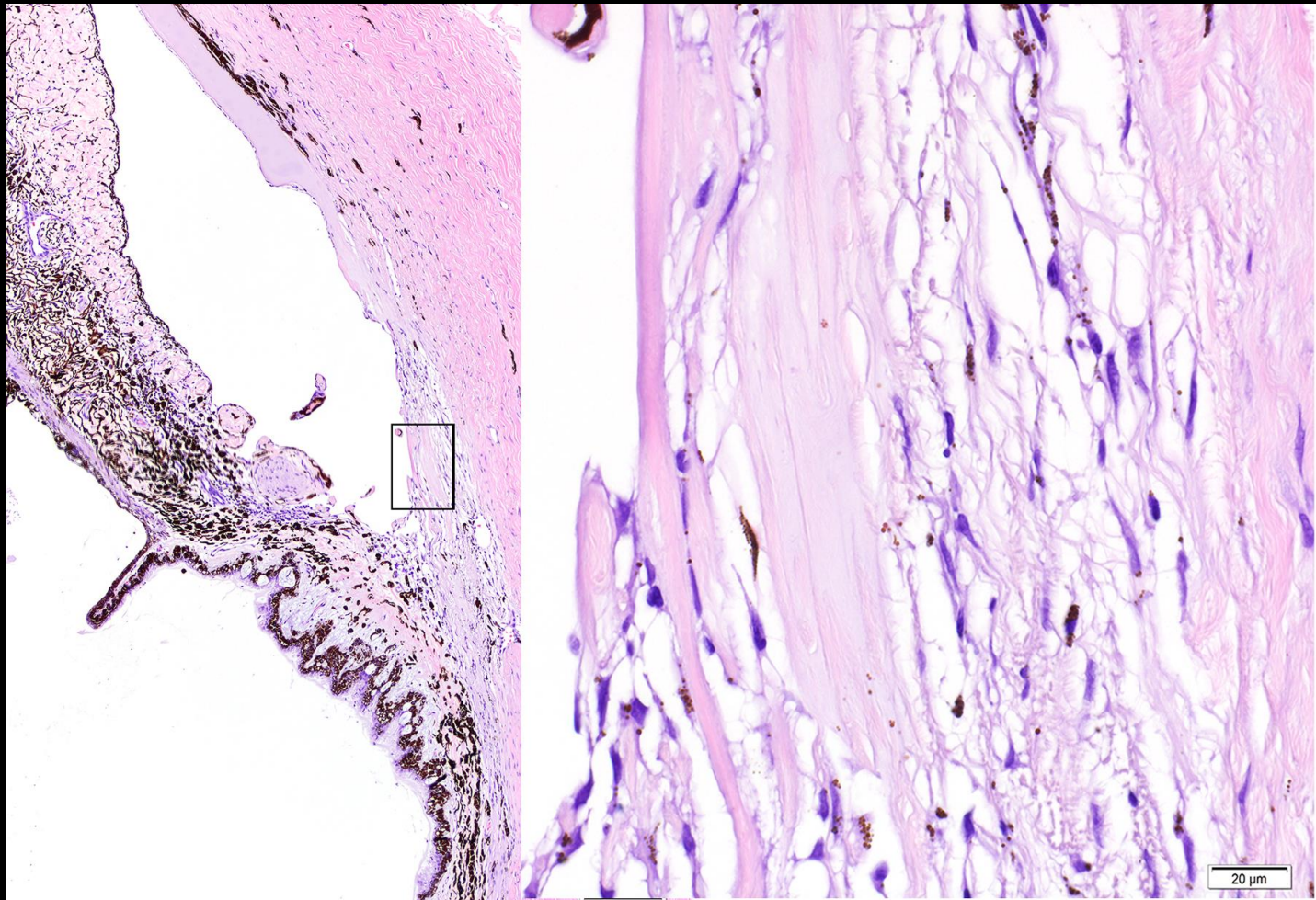
Elastin



Trichrome

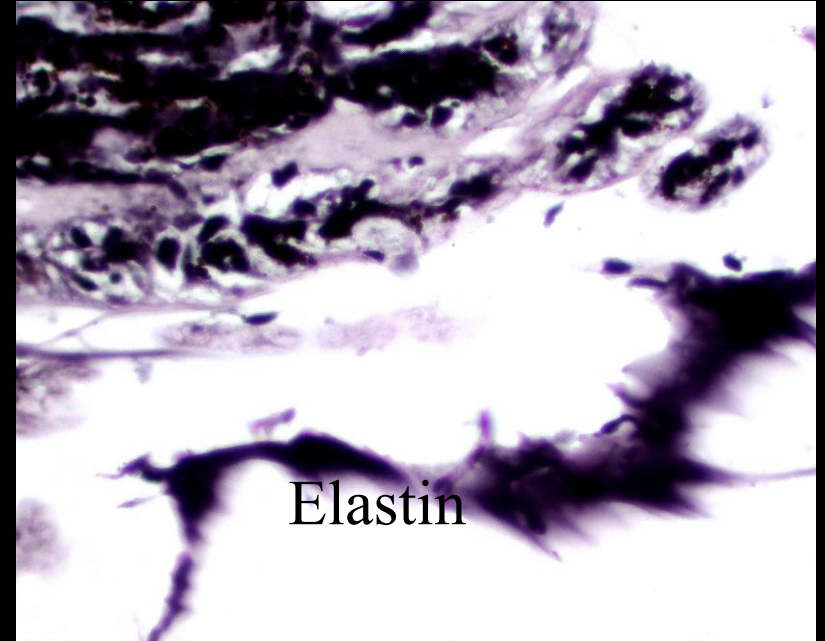
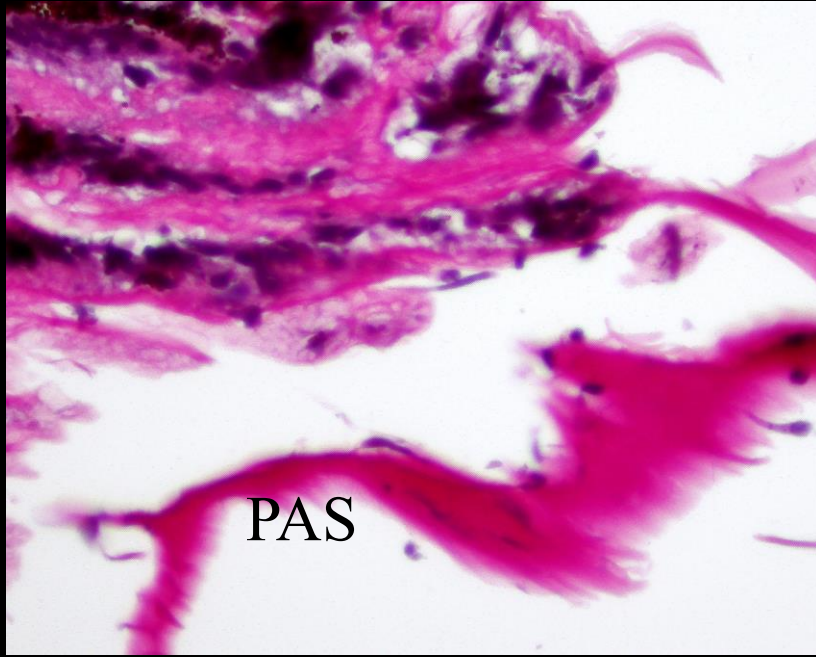


# Dysplastic Protein in the Trabecular Meshwork

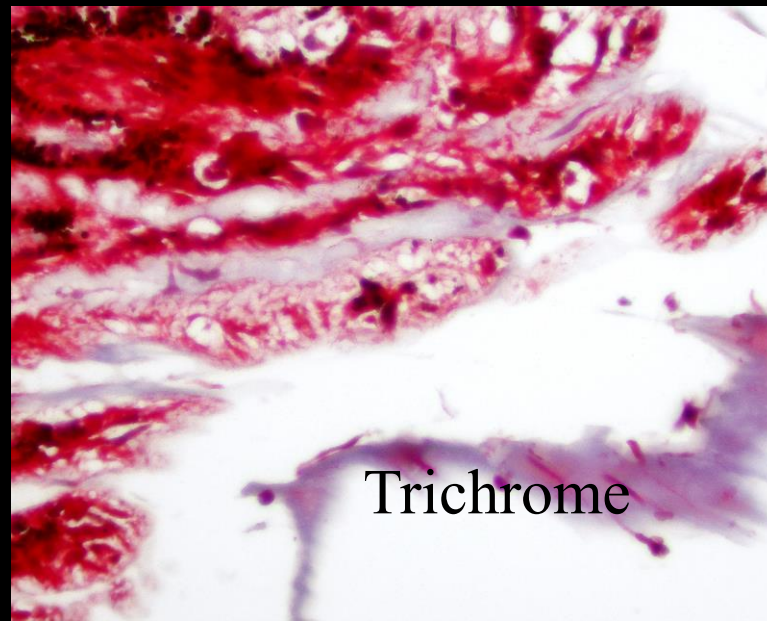




# Primary Lens Luxation Glaucoma



Normal staining pattern  
for zonular ligaments



# Miscellaneous Conditions

- Lens Luxation Glaucoma
- Thin Walled Iridociliary Cysts (Pigmentary Uveitis)
- Other iridociliary cystic conditions
- Canine Ocular Gliovascular Syndrome
- Hypertensive Vasculopathy

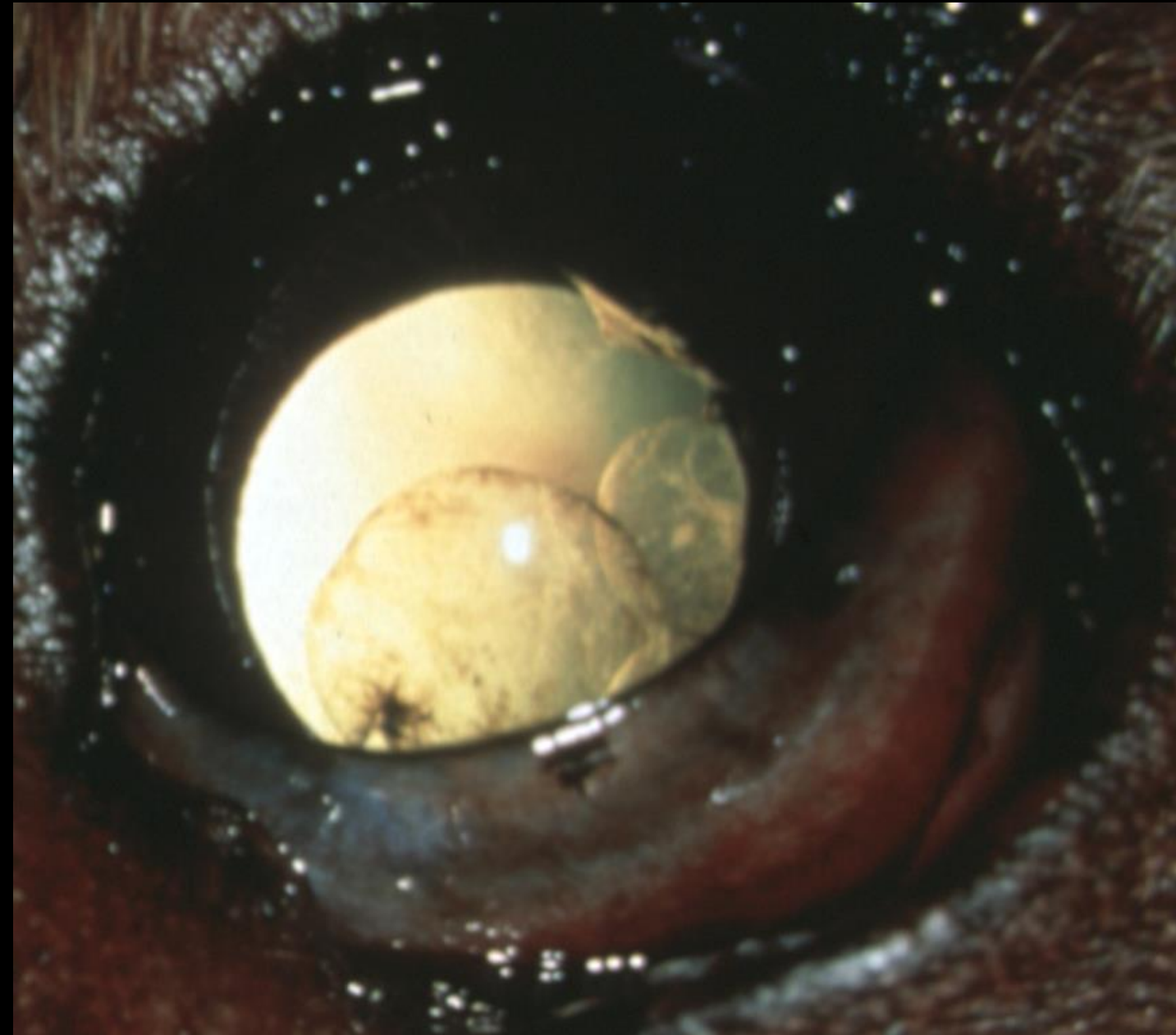
# Thin-walled iridociliary cysts

## Pigmentary Uveitis

### Golden Retriever Uveitis

- 292 cases in the COPLOW database (all in Golden Retrievers)
- Age range
  - 0.6% Affected dogs are less than 7 years old
  - 12% of affected dogs are older than 11 years old
  - 82% of affected dogs are between 7 and 11 years old
- 133 Female and 155 Male
- Labradors and Bulldogs can have similar condition

# Thin Walled Iridociliary Cysts

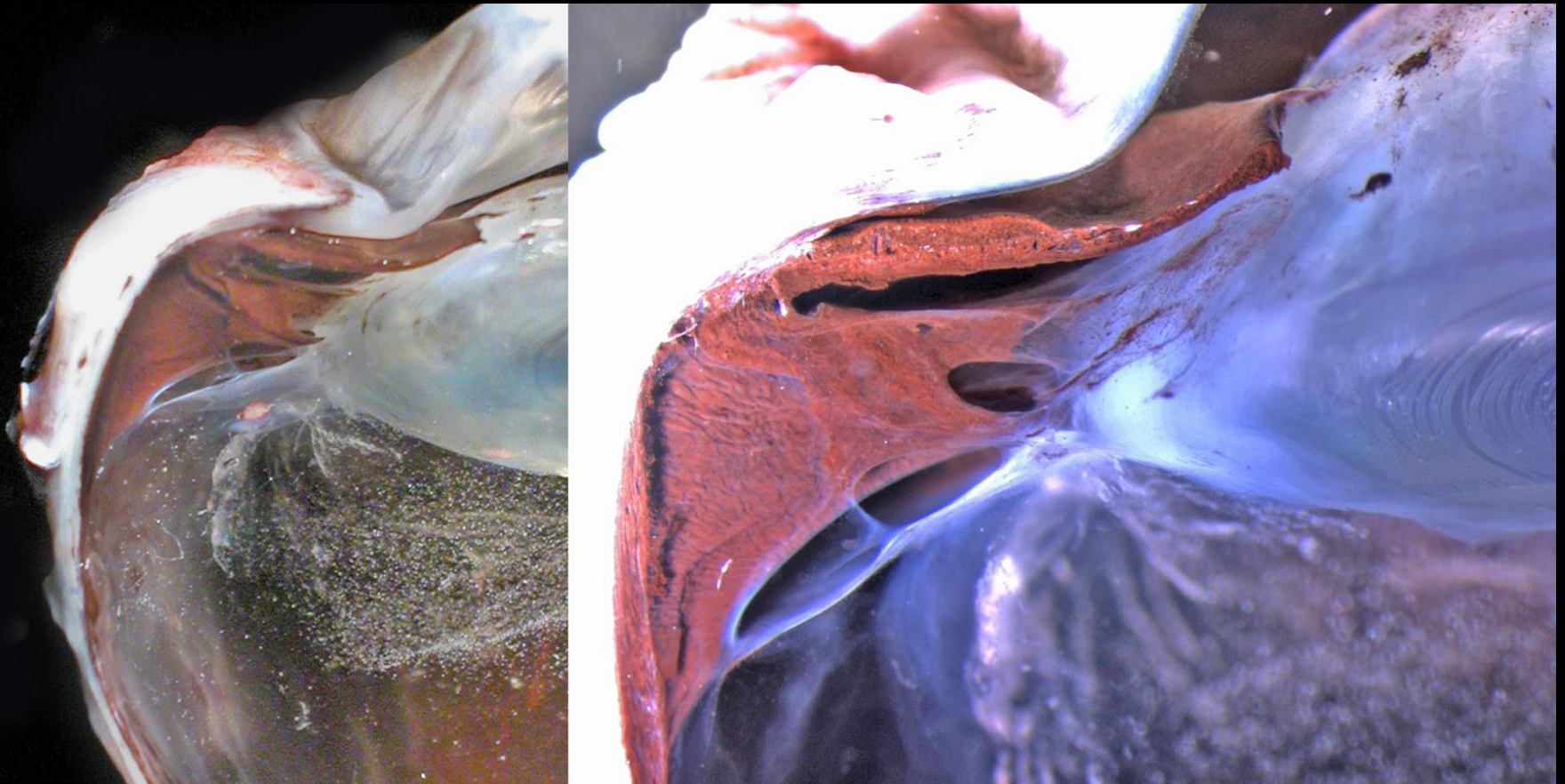


This pattern of cyst is not typical of the clinical disease

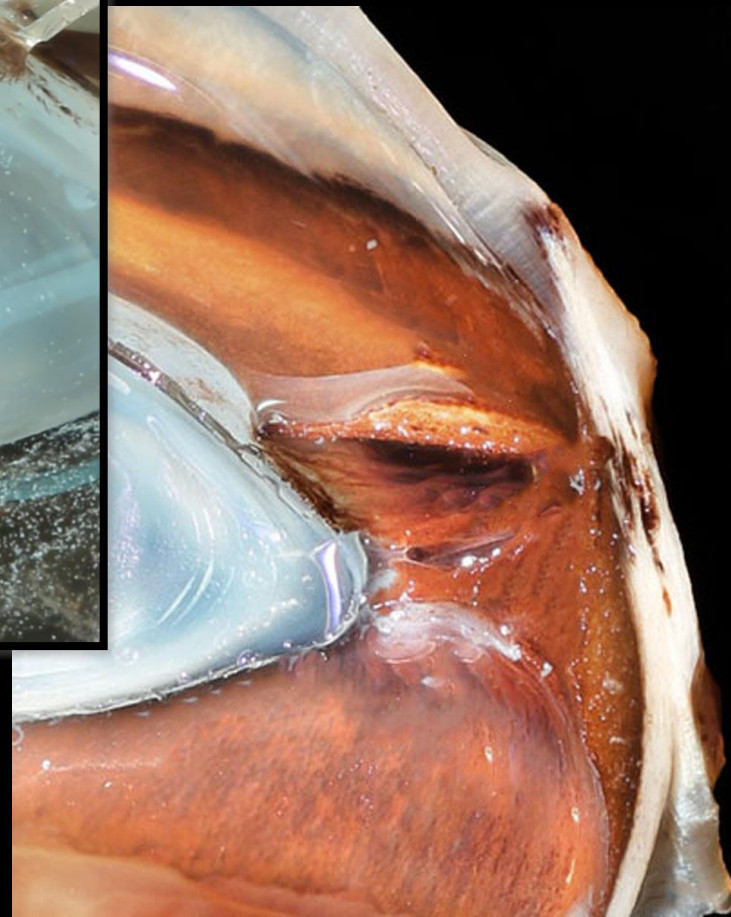
# Thin Walled Iridociliary Cysts



# Thin Walled Iridociliary Cysts



# Thin Walled Iridociliary Cysts

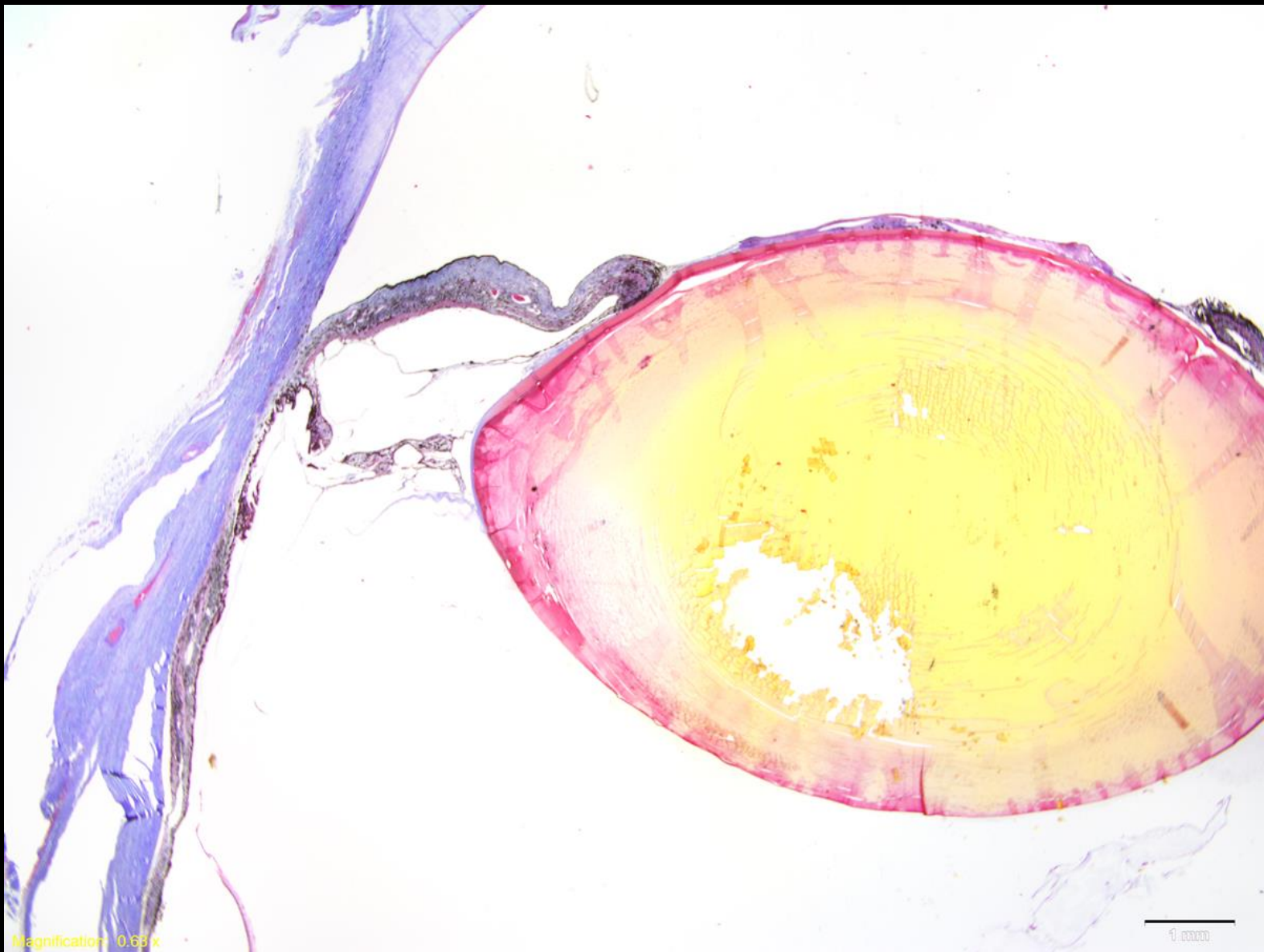


# Thin Walled Iridociliary Cysts

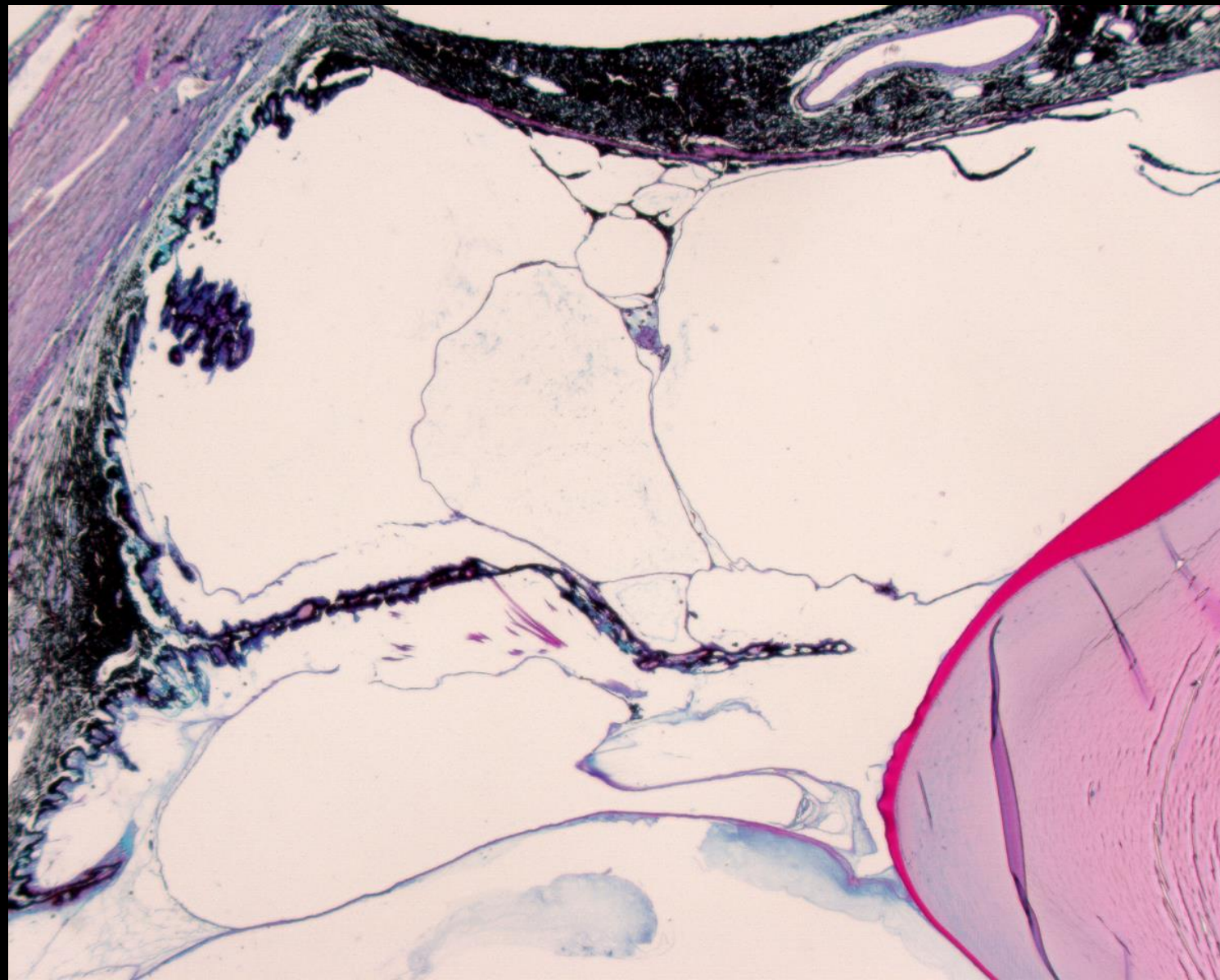




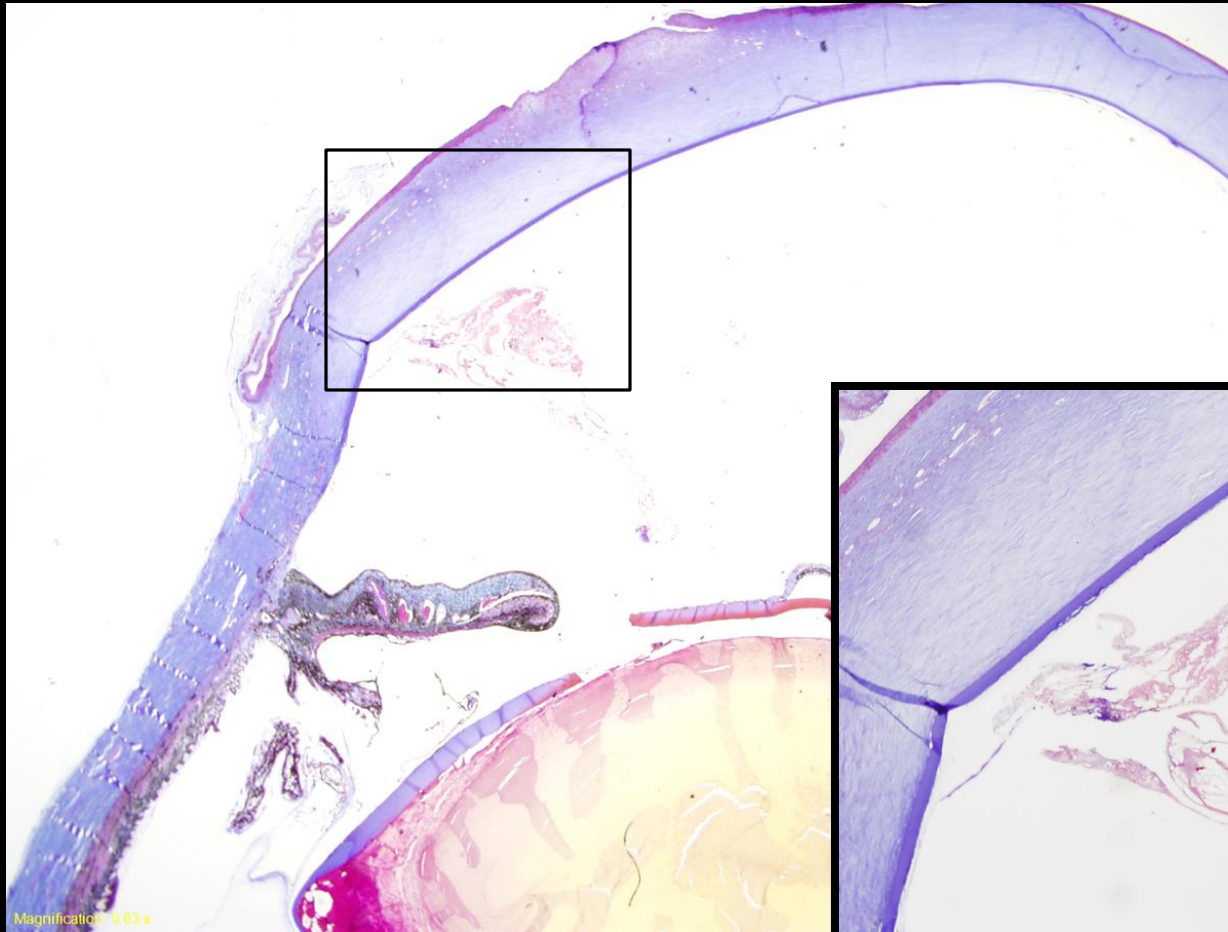
# Thin Walled Iridociliary Cysts



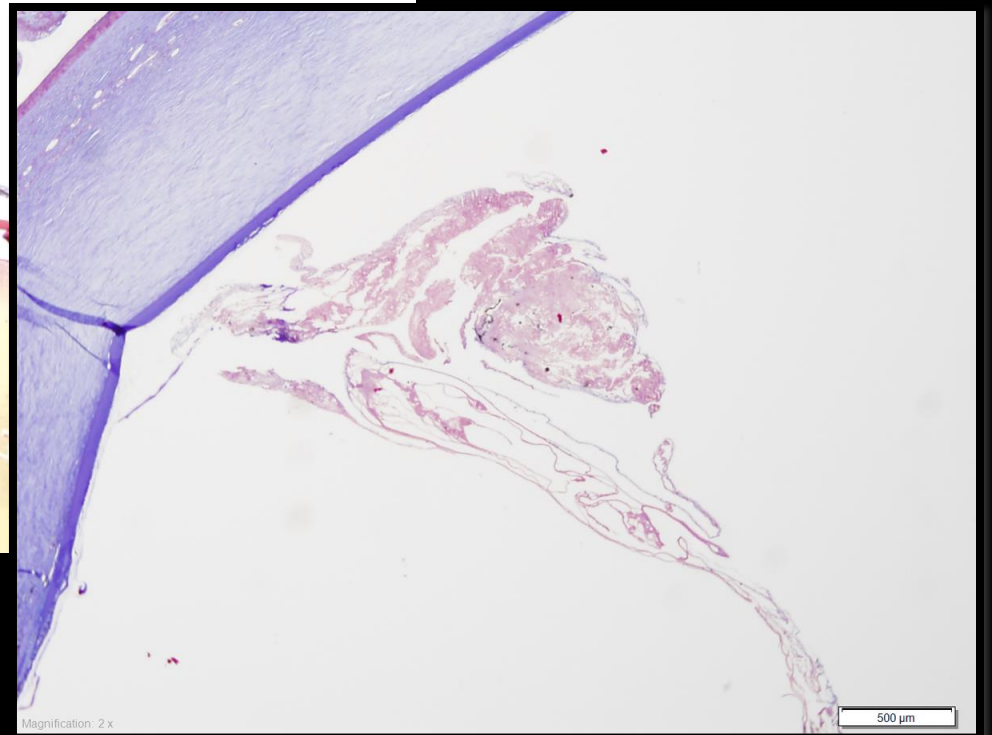
# Thin Walled Iridociliary Cysts



# Thin Walled Iridociliary Cysts



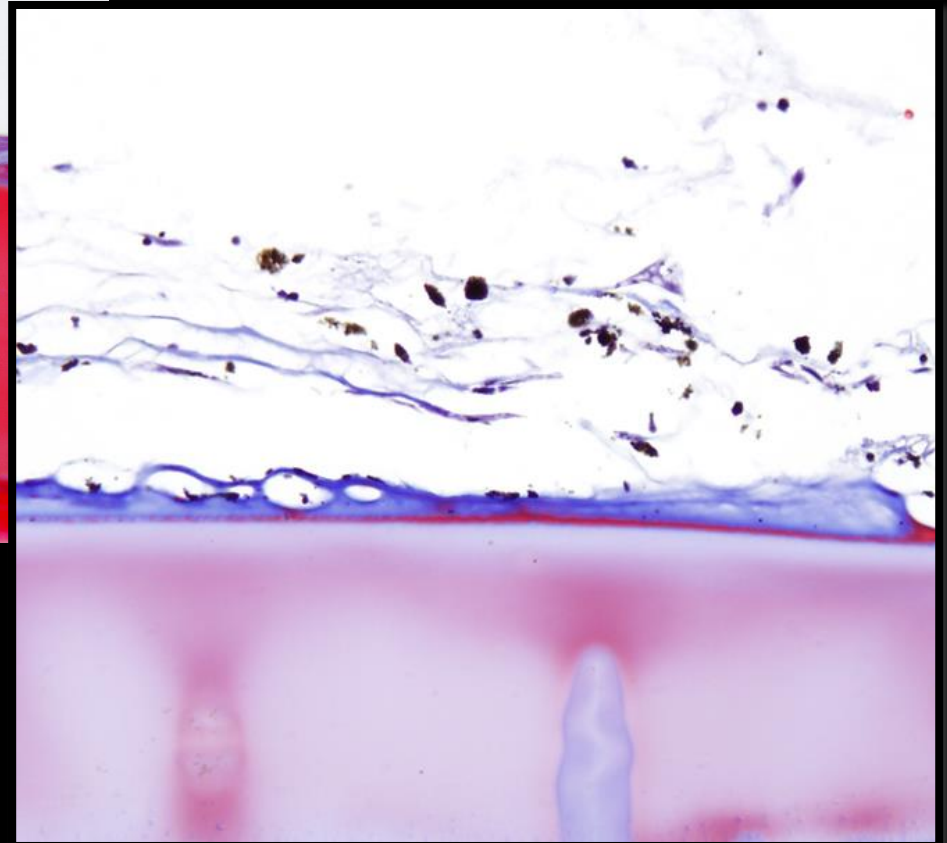
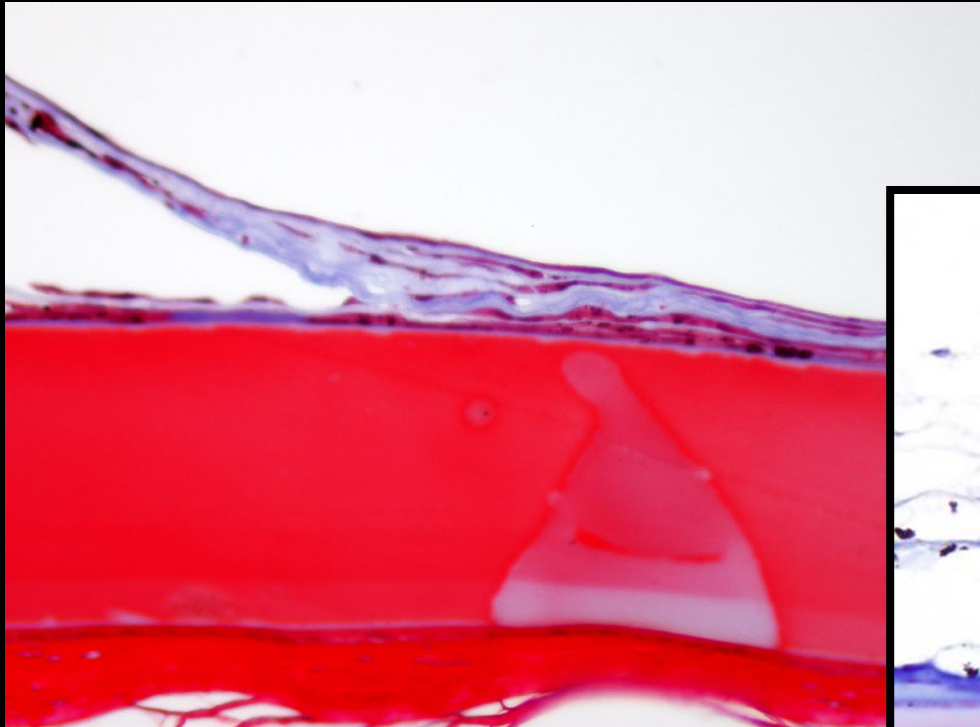
Magnification: 4.63 x



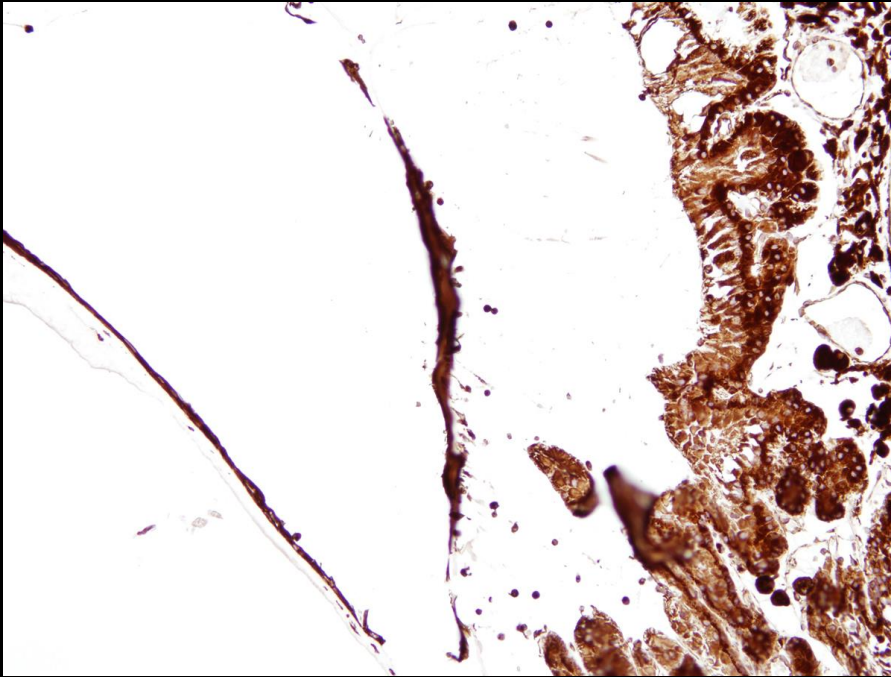
Magnification: 2 x

500  $\mu$ m

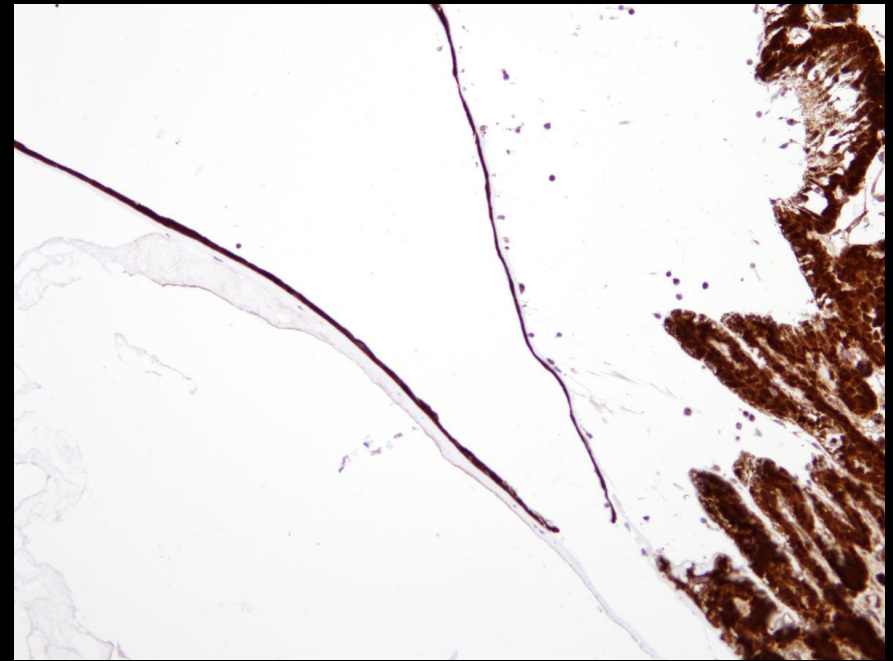
# Thin Walled Iridociliary Cysts



# Thin Walled Iridociliary Cysts

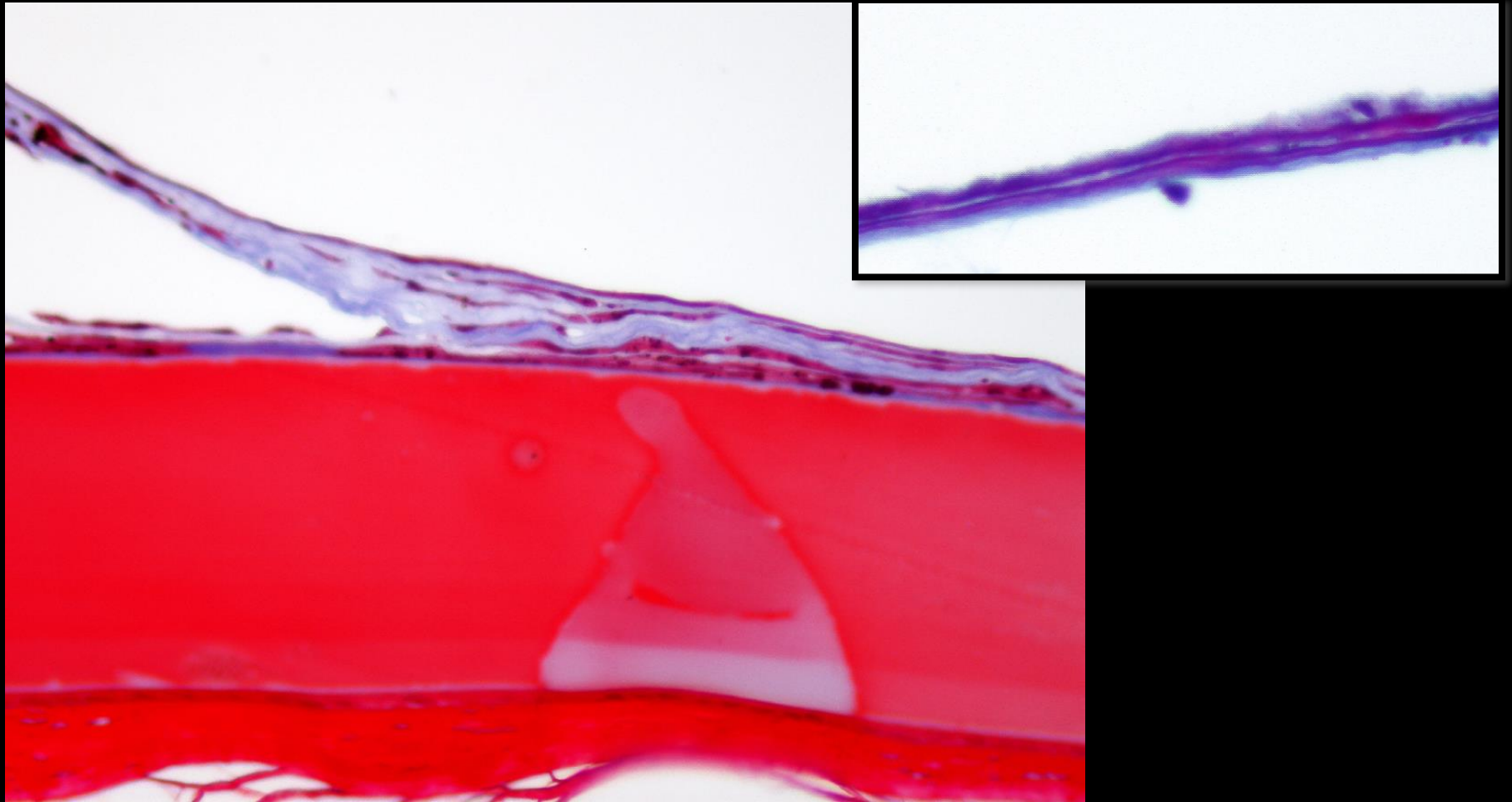


NSE

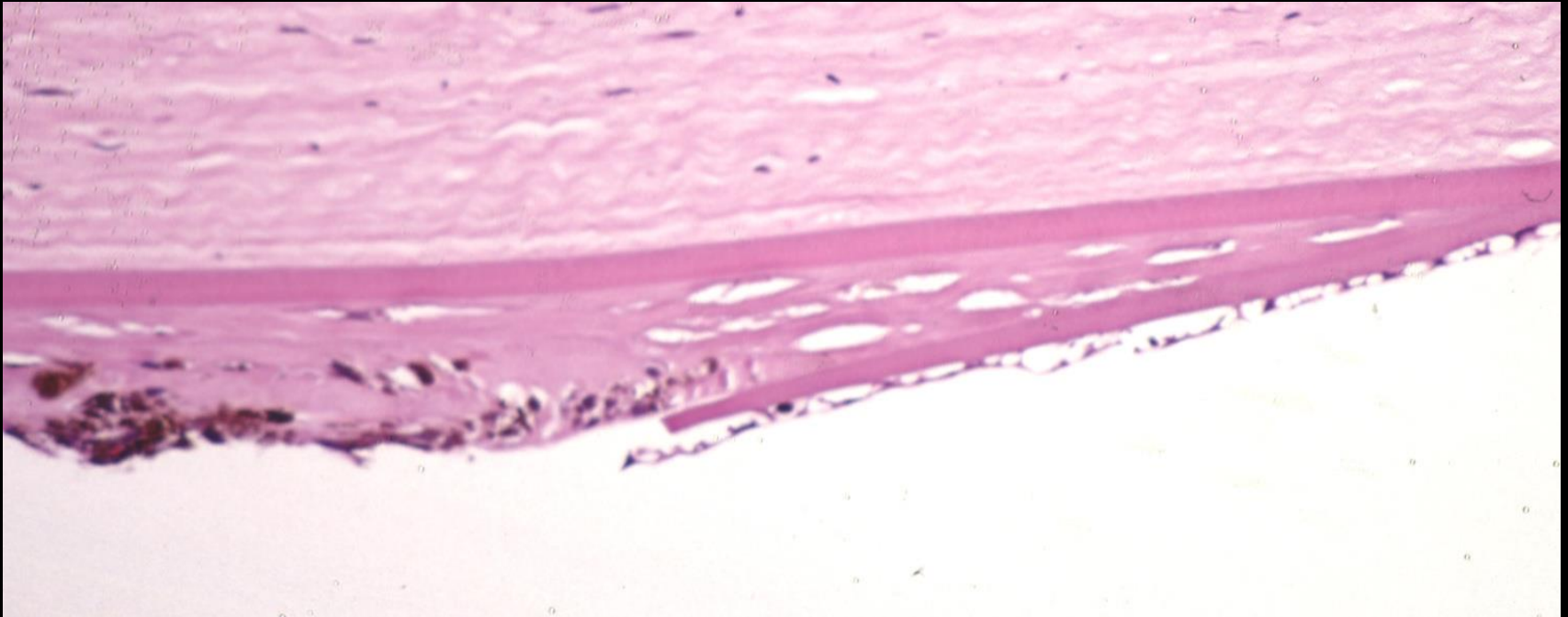


Vimentin

# Thin Walled Iridociliary Cysts



# Thin Walled Iridociliary Cysts



# Miscellaneous Conditions

- Lens Luxation Glaucoma
- Thin Walled Iridociliary Cysts (Pigmentary Uveitis)
- **Other iridociliary cystic conditions**
- Canine Ocular Gliovascular Syndrome
- Hypertensive vasculopathy



# Iridociliary Cysts in Great Danes

*More commonly a European phenomenon*

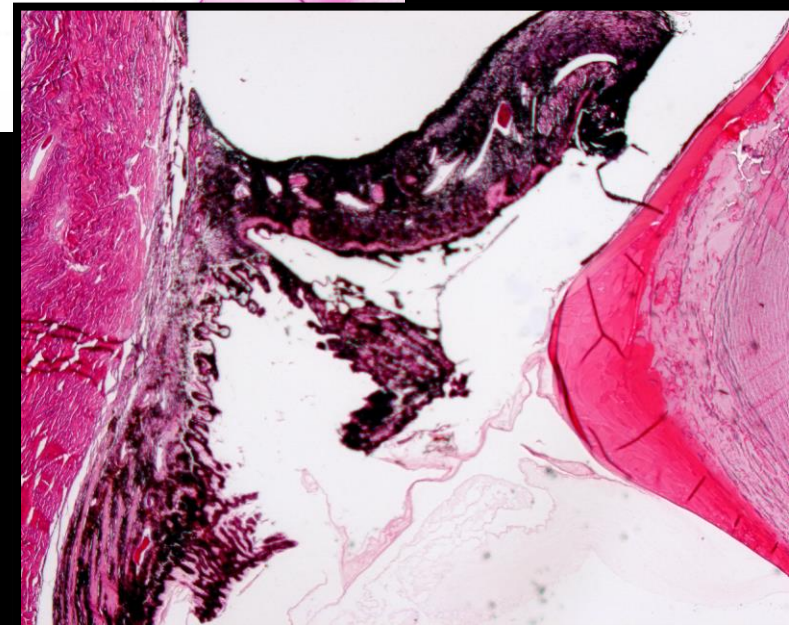
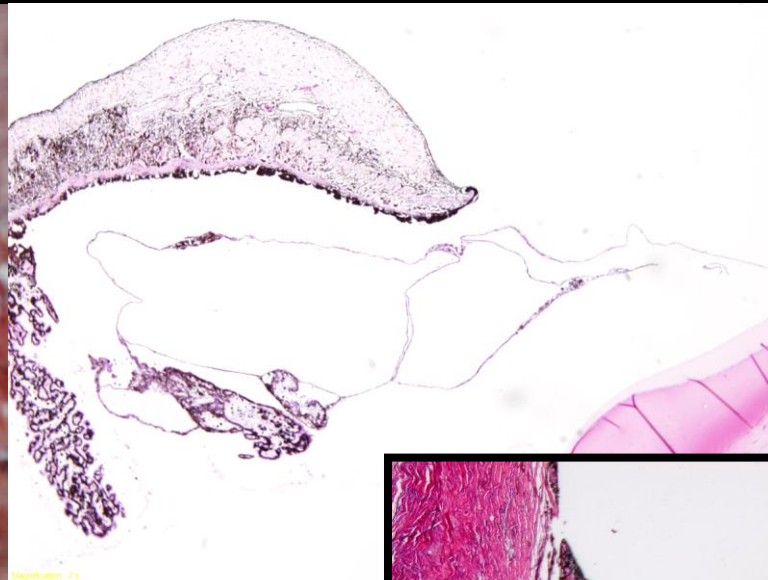
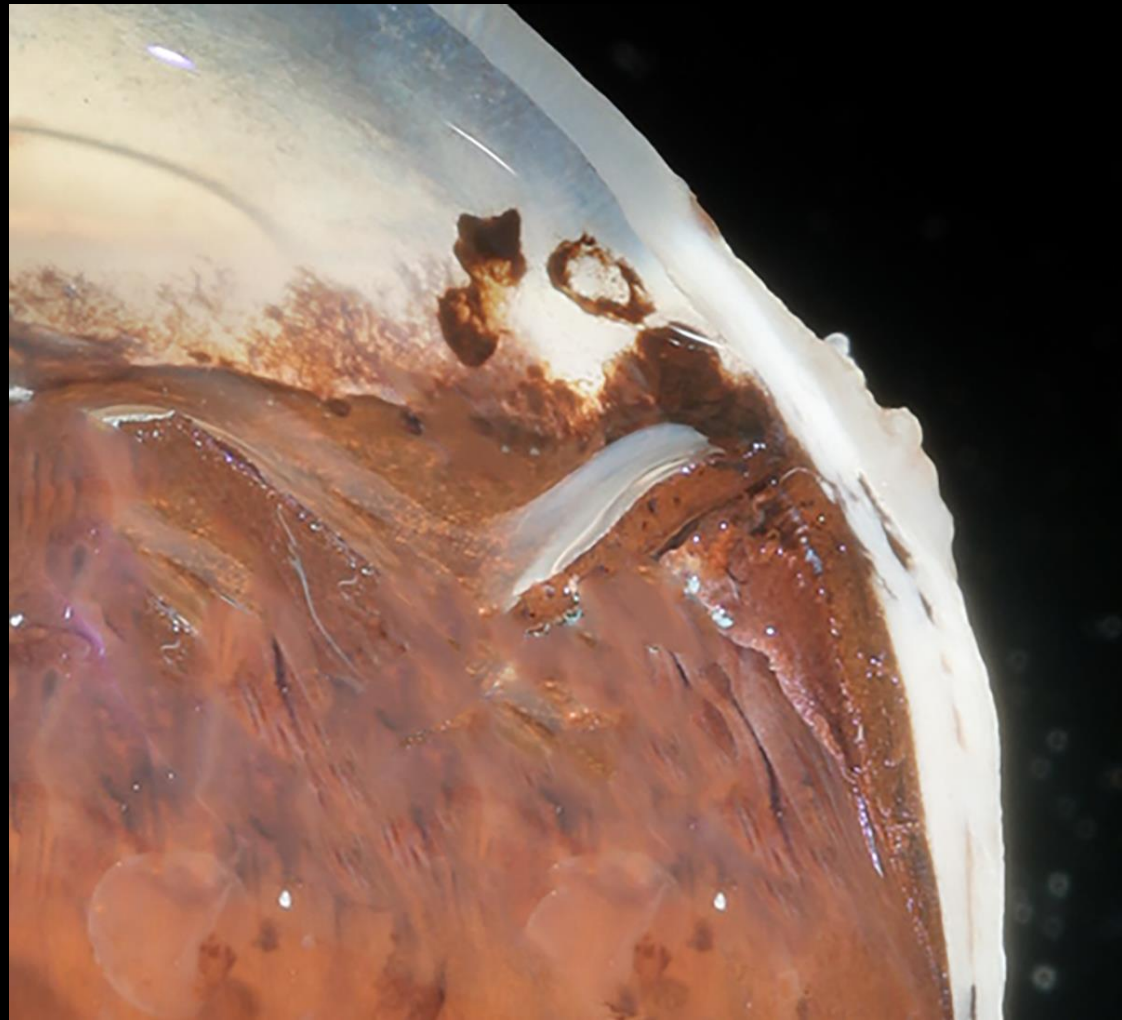
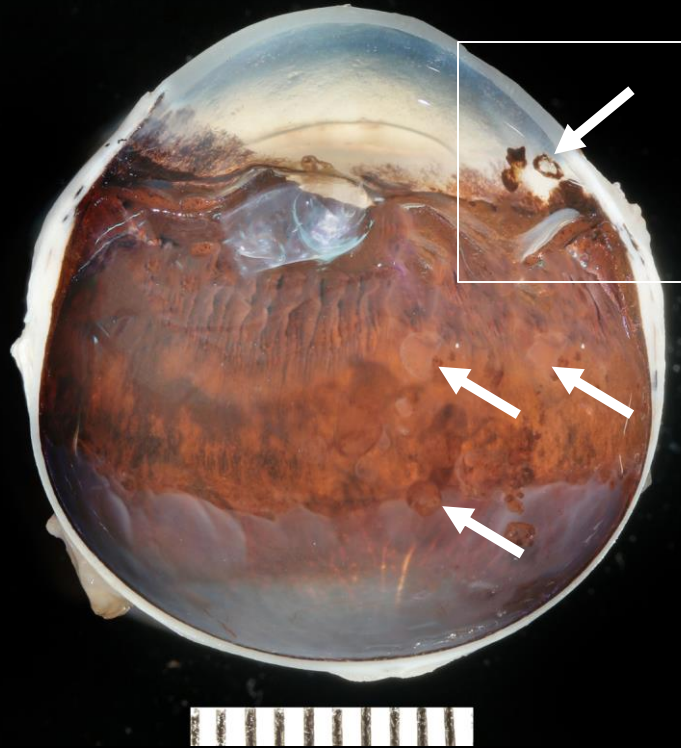
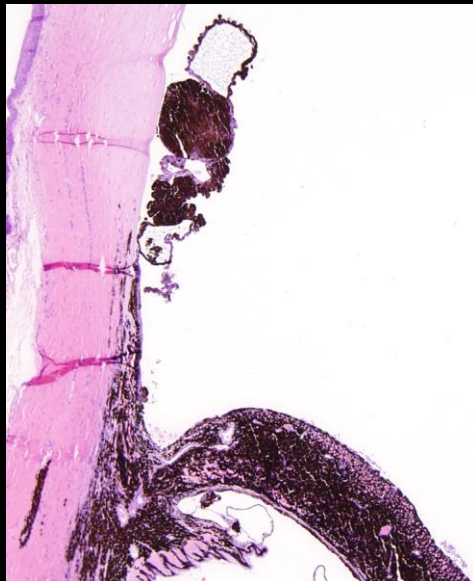


Image from John Sapienza

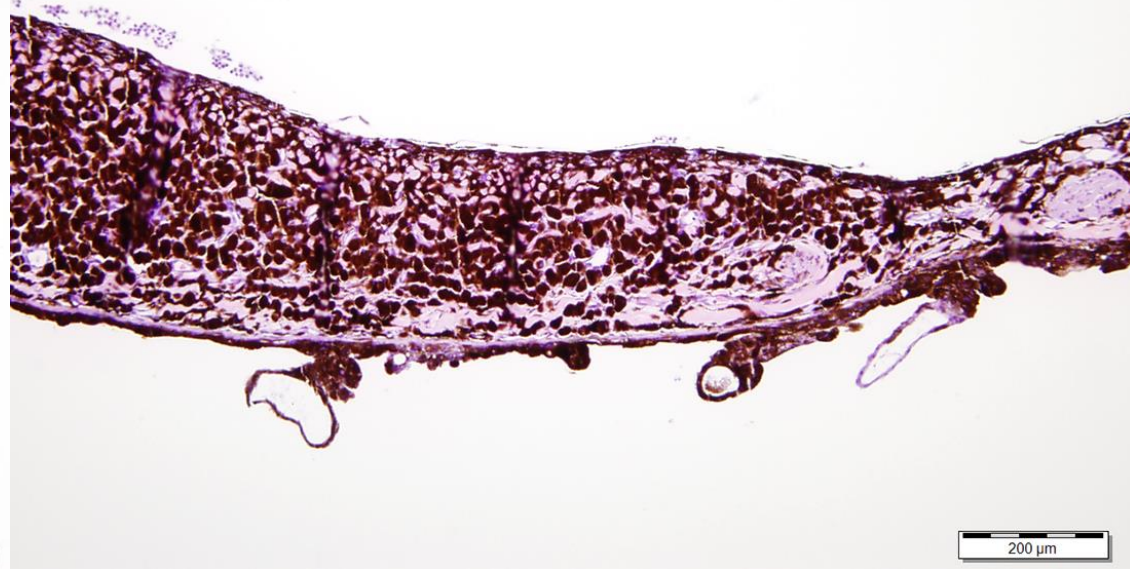
# Boston Terrier Type Cysts



# Boston Terrier Type Cysts



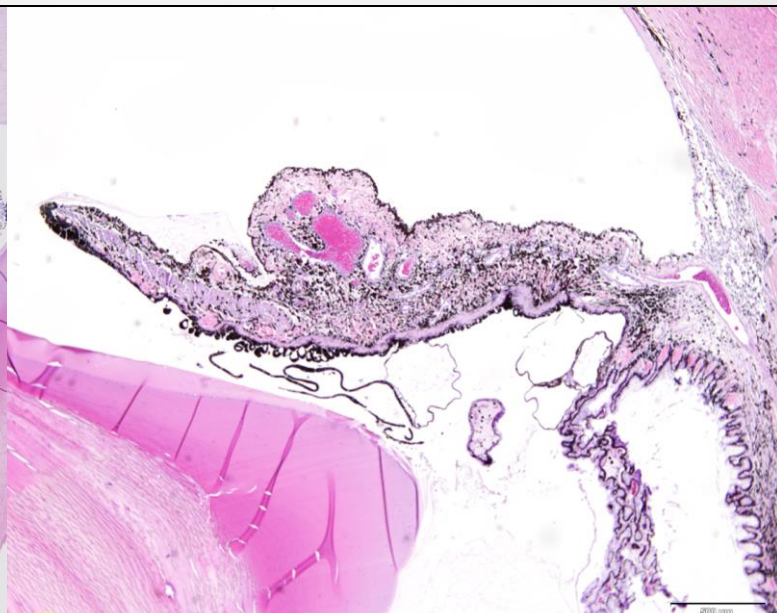
500  $\mu$ m



200  $\mu$ m

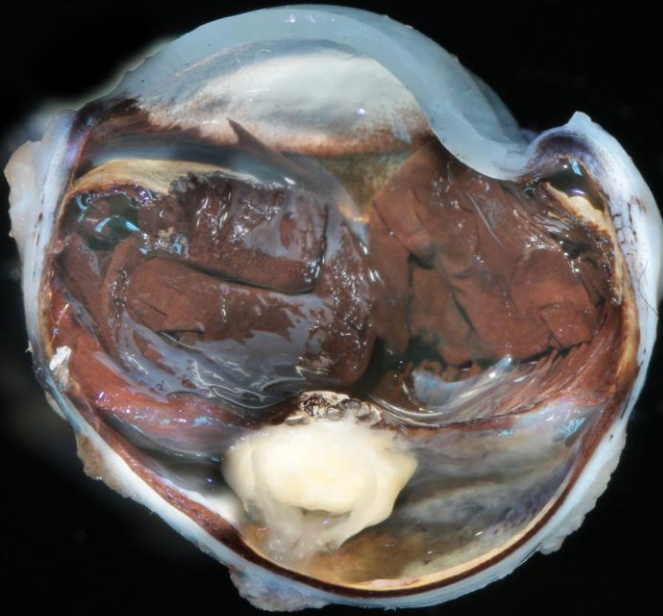


500  $\mu$ m

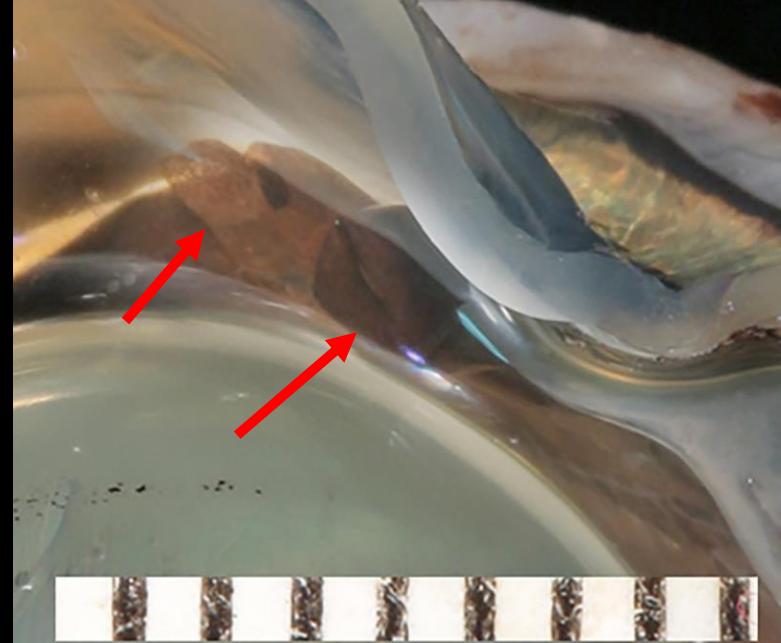
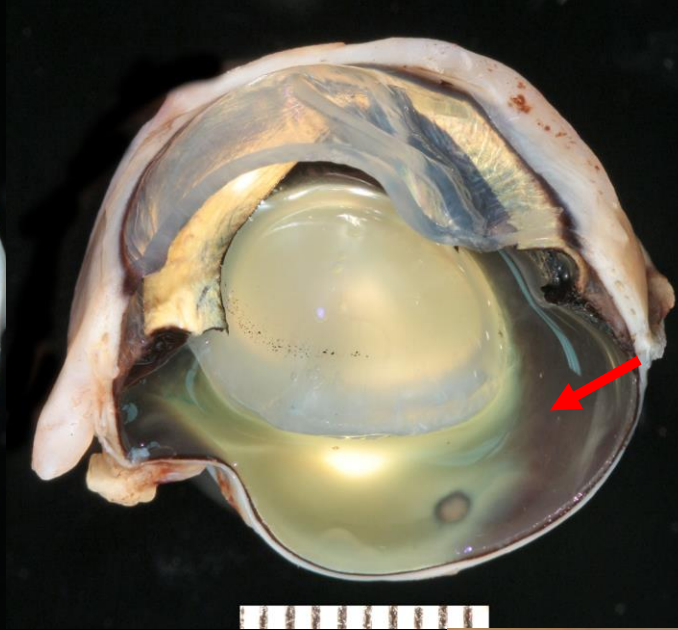


200  $\mu$ m

# Feline Iridal Cysts



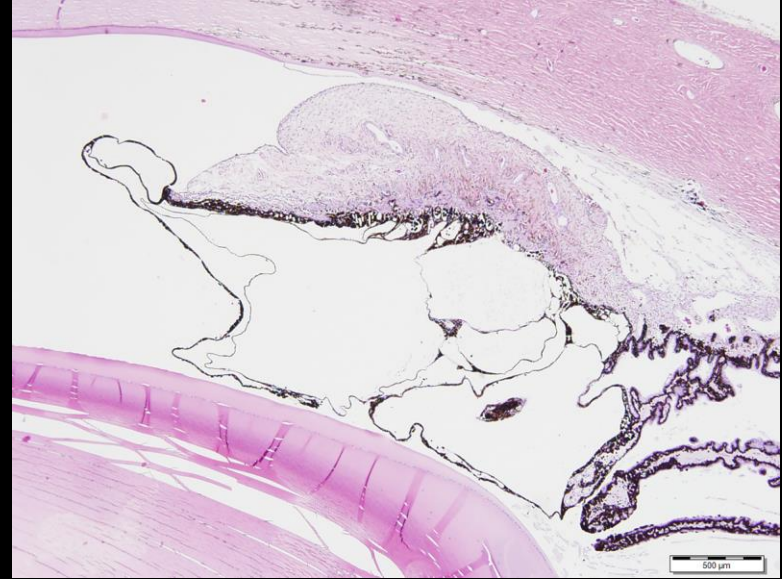
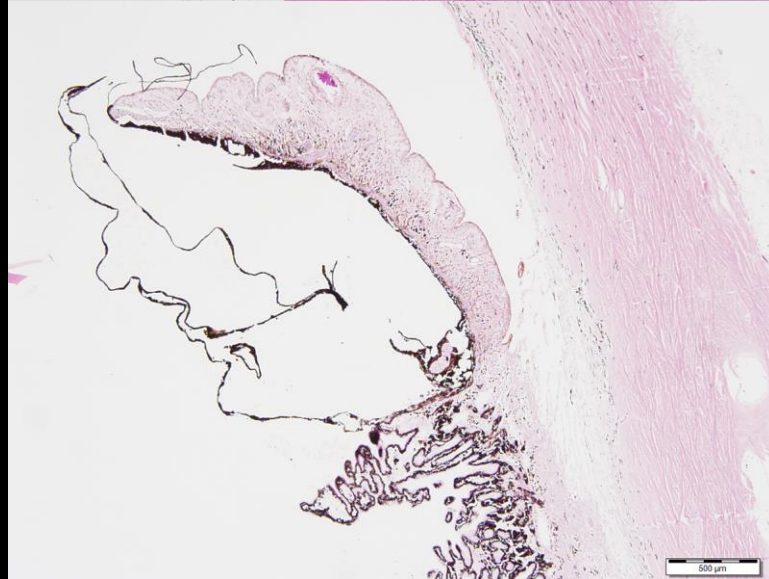
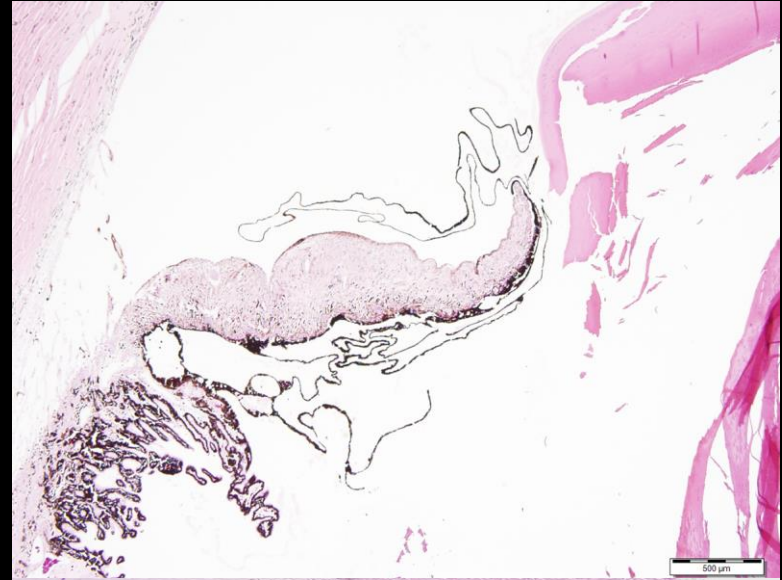
Secondary to trauma



Masquerading as neoplasia  
15 cases in the database

# Feline Irida Cysts

## Masquerading as neoplasia

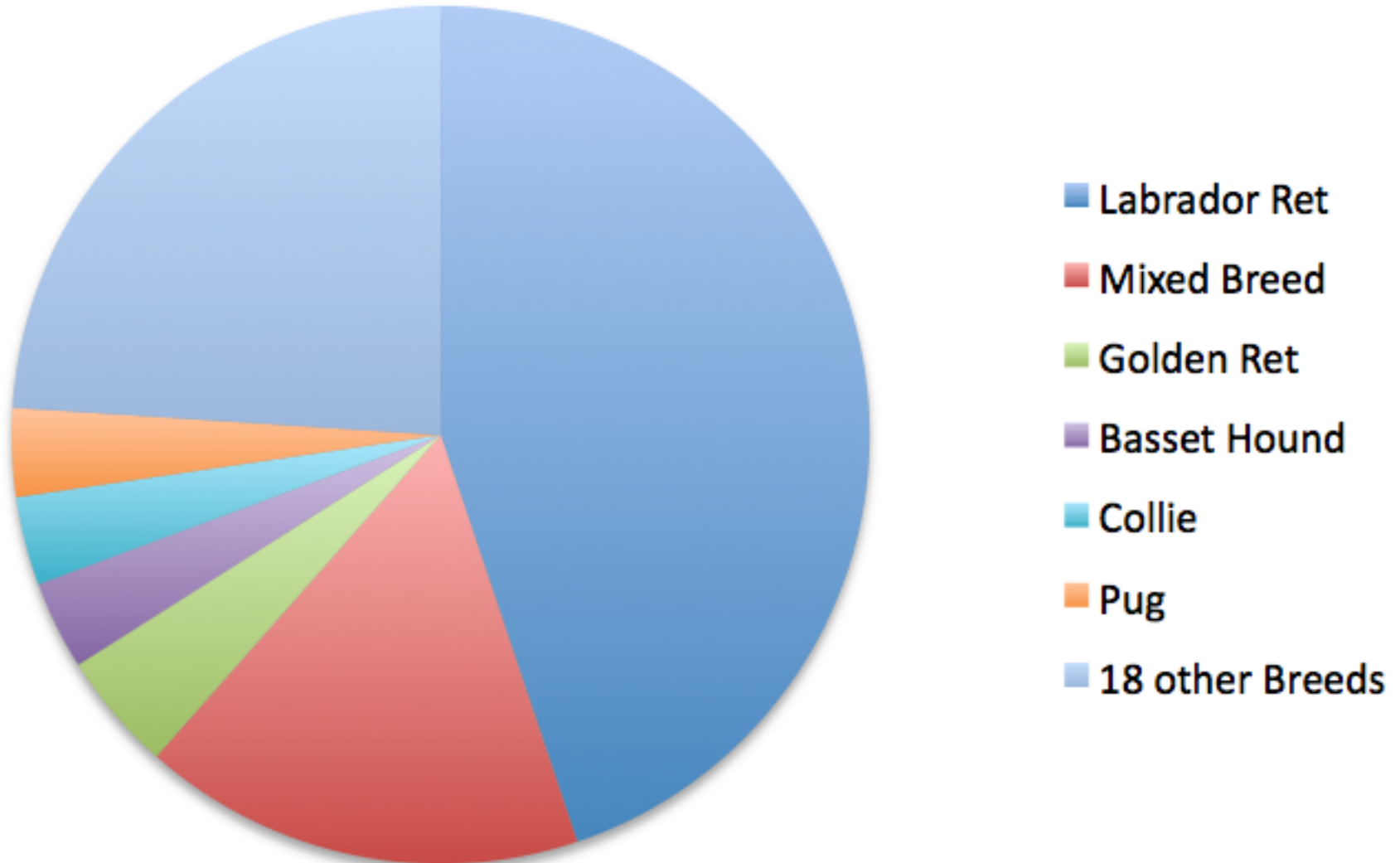


# Miscellaneous Conditions

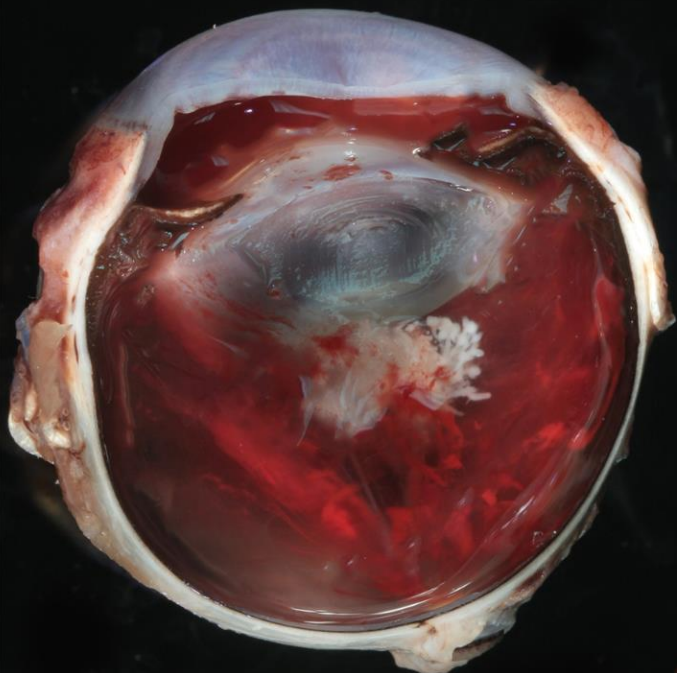
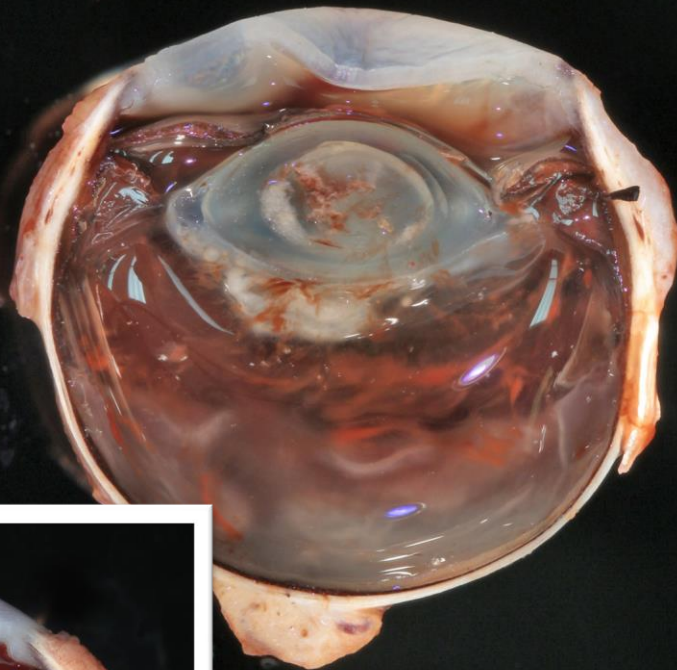
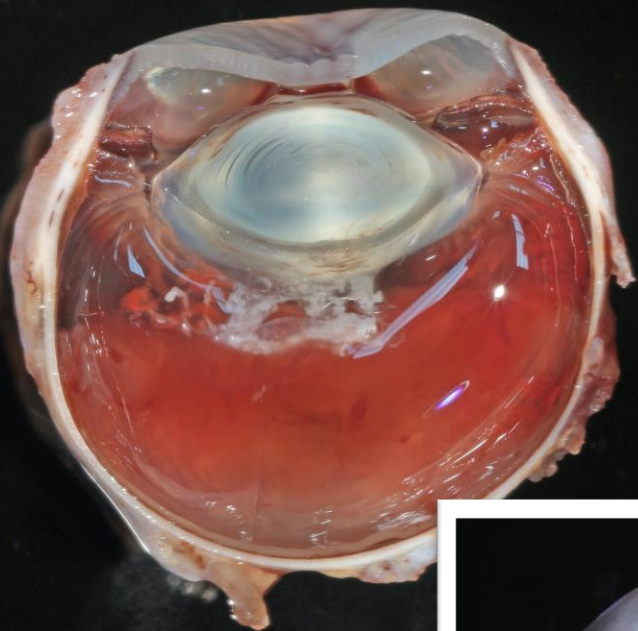
- Lens Luxation Glaucoma
- Thin Walled Iridociliary Cysts (Pigmentary Uveitis)
- Other iridociliary cystic conditions
- **Canine Ocular Gliovascular Syndrome**
- Hypertensive vasculopathy

# Canine Ocular Gliovascular Syndrome

Canine Ocular Gliovascular Syndrome  
n = 94

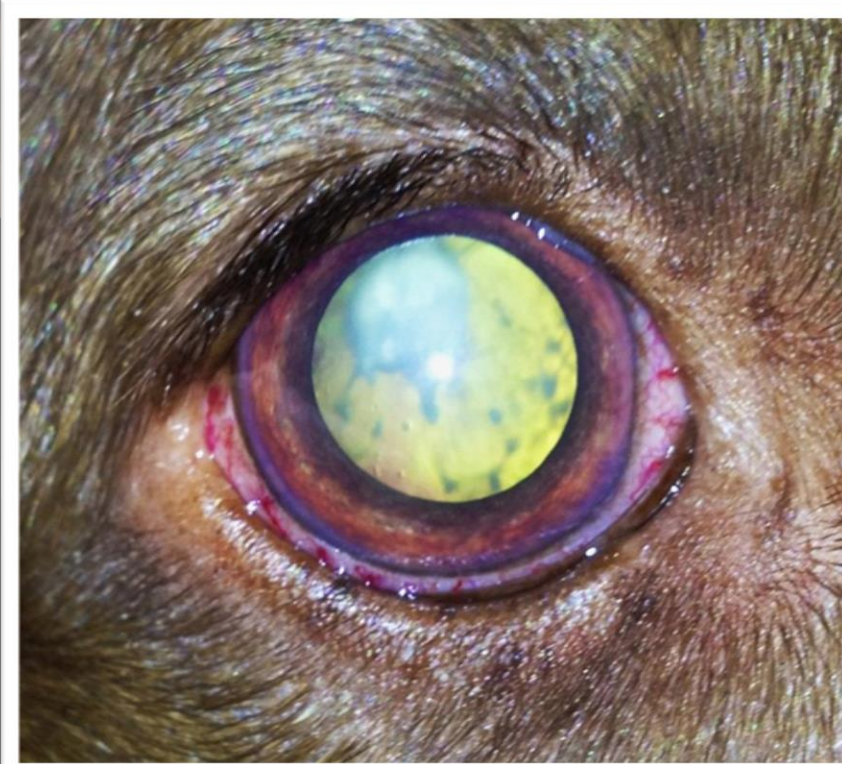
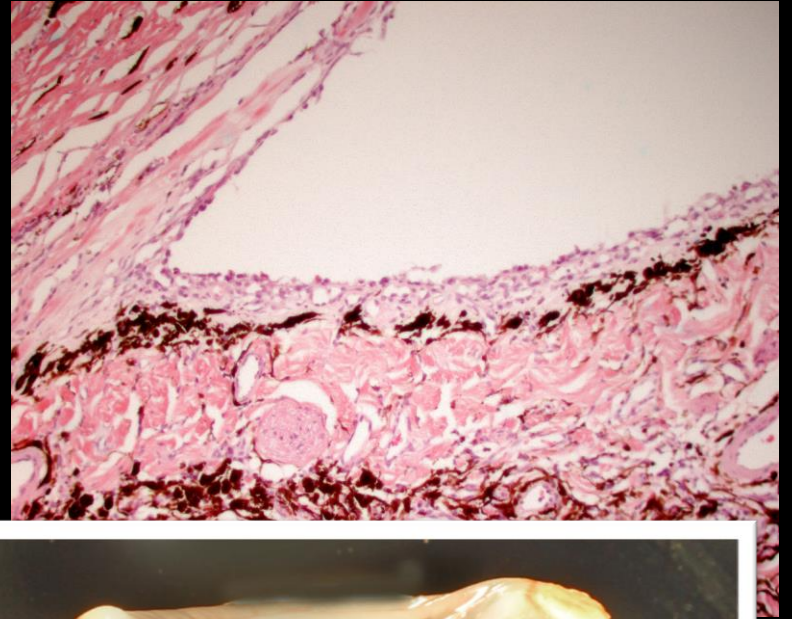
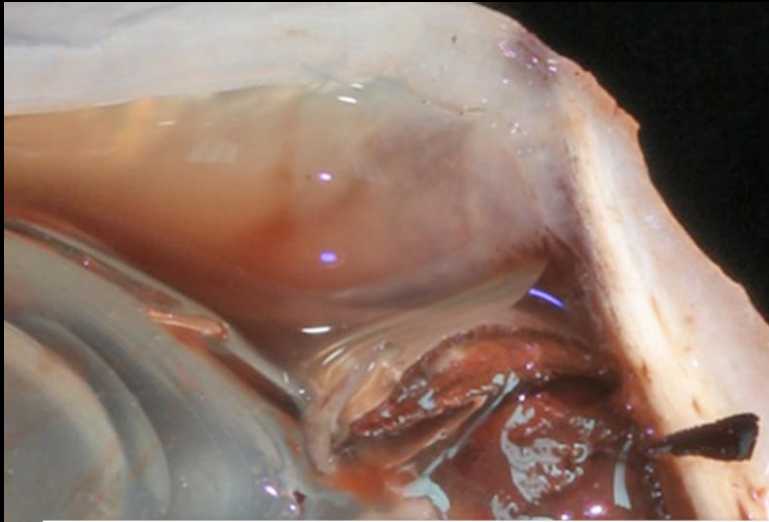


# Canine Ocular Gliovascular Syndrome

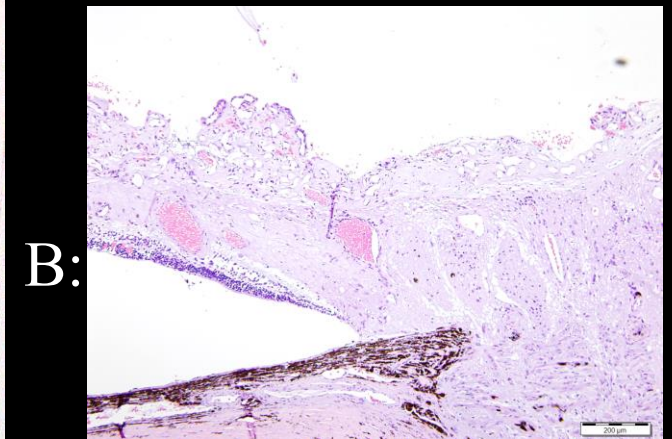
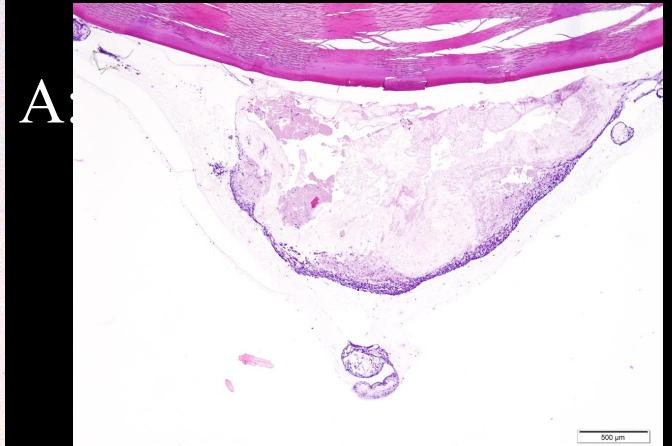




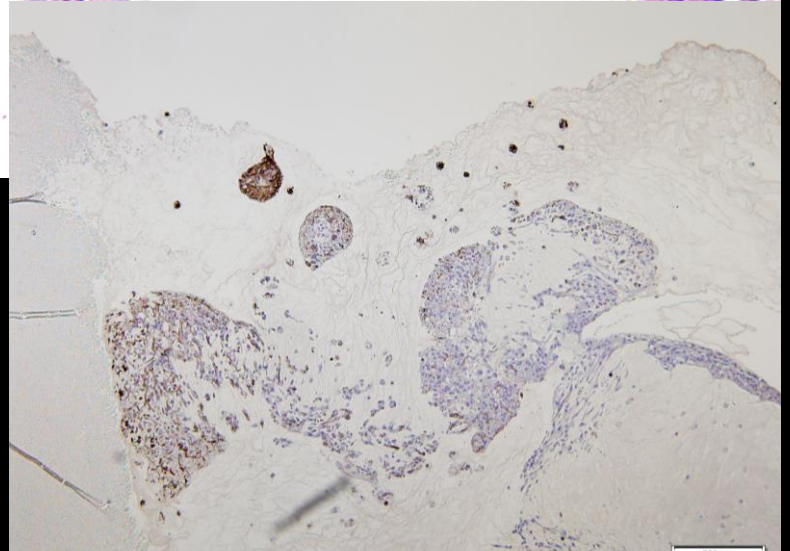
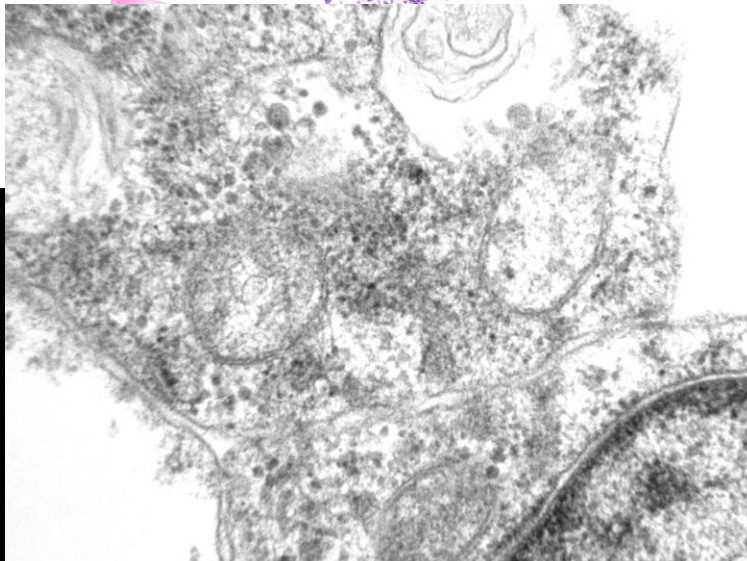
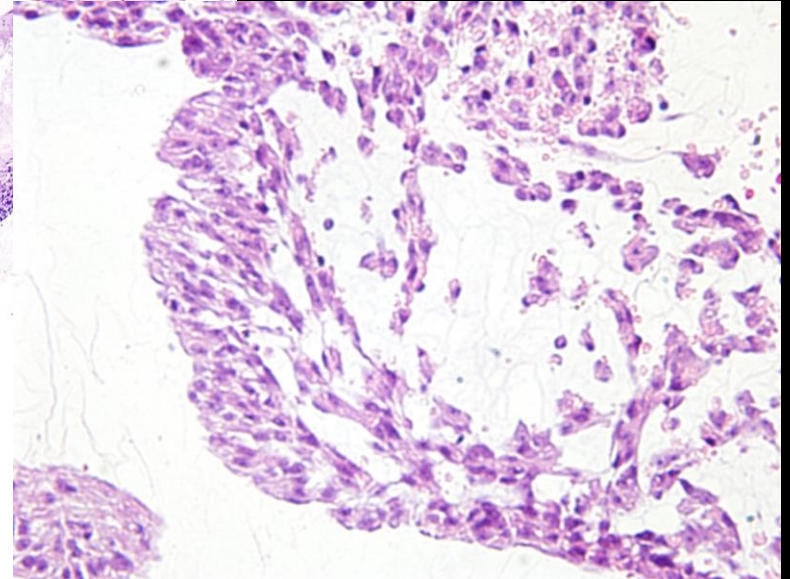
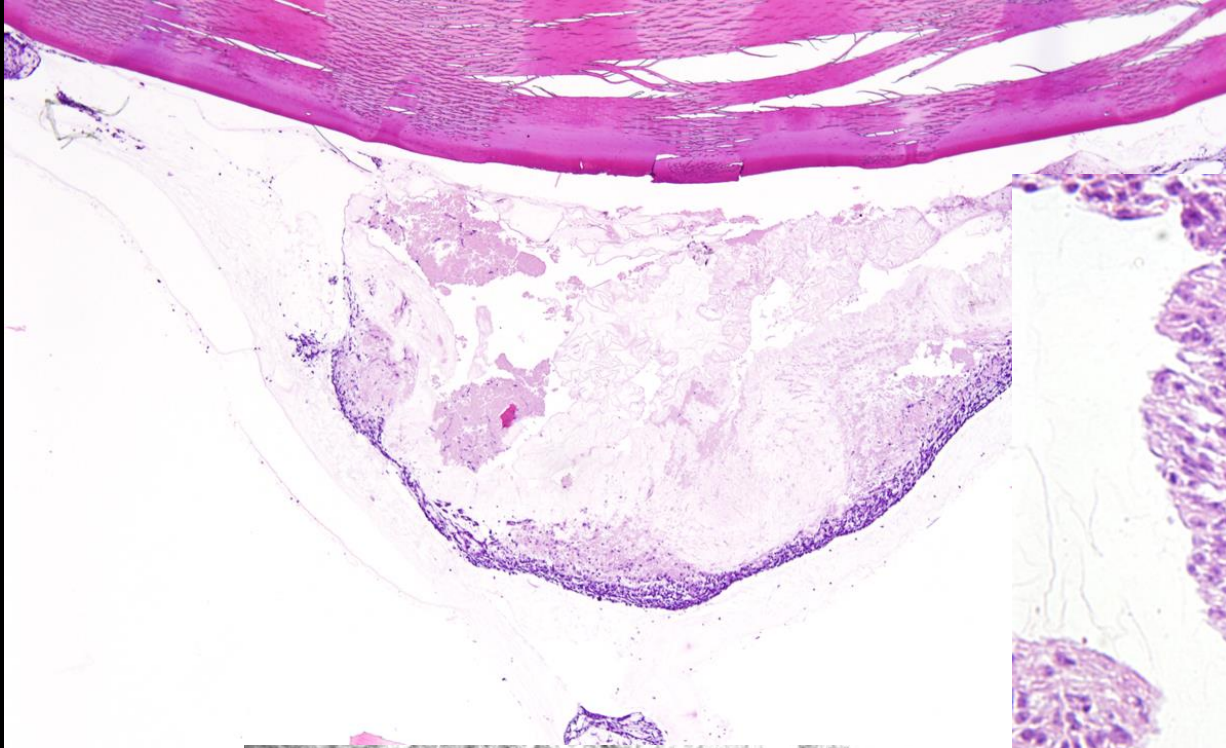
# Canine Ocular Gliovascular Syndrome



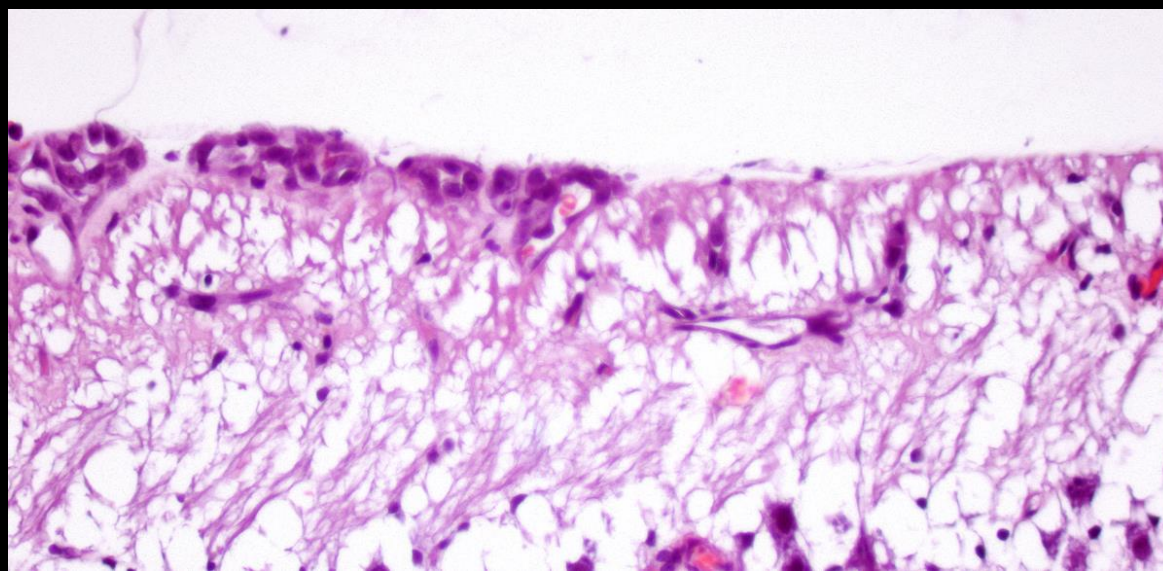
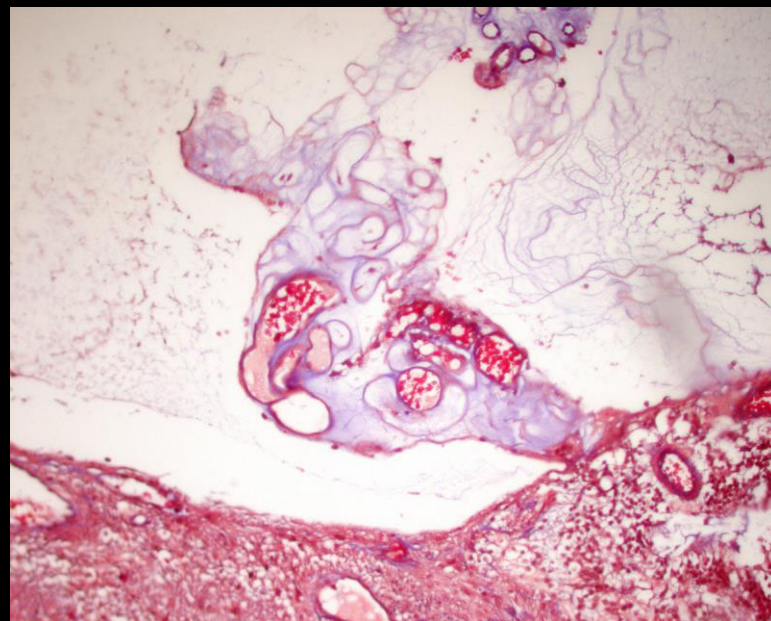
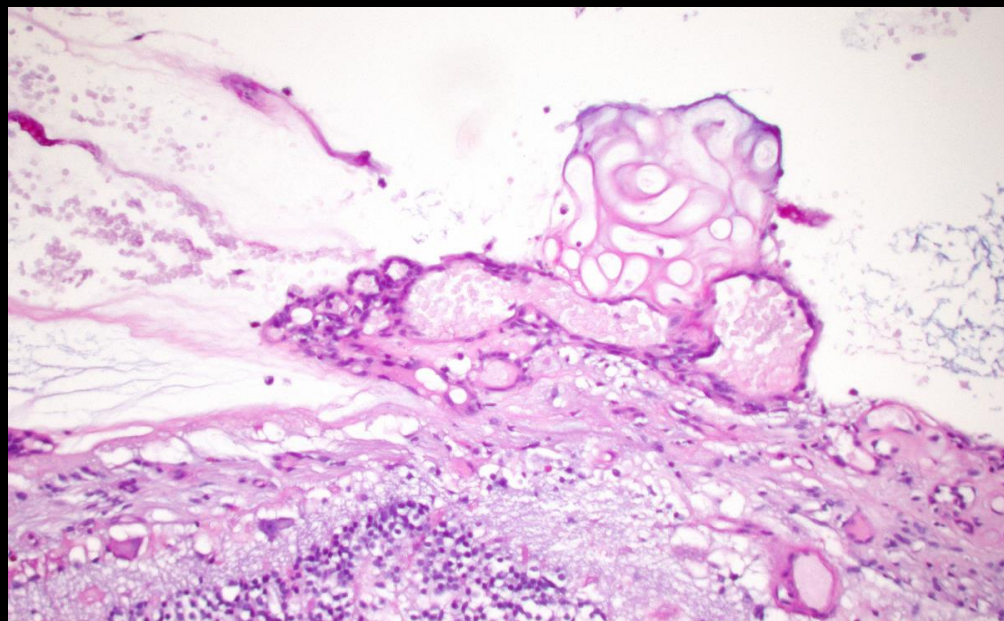
# Canine Ocular Gliovascular Syndrome



# Canine Ocular Gliovascular Syndrome



# Canine Ocular Gliovascular Syndrome



# Miscellaneous Conditions

- Lens Luxation Glaucoma
- Thin Walled Iridociliary Cysts (Pigmentary Uveitis)
- Canine Ocular Gliovascular Syndrome
- **Hypertensive vasculopathy**

# Canine Hypertensive Vasculopathy

“Blood in the Eye”

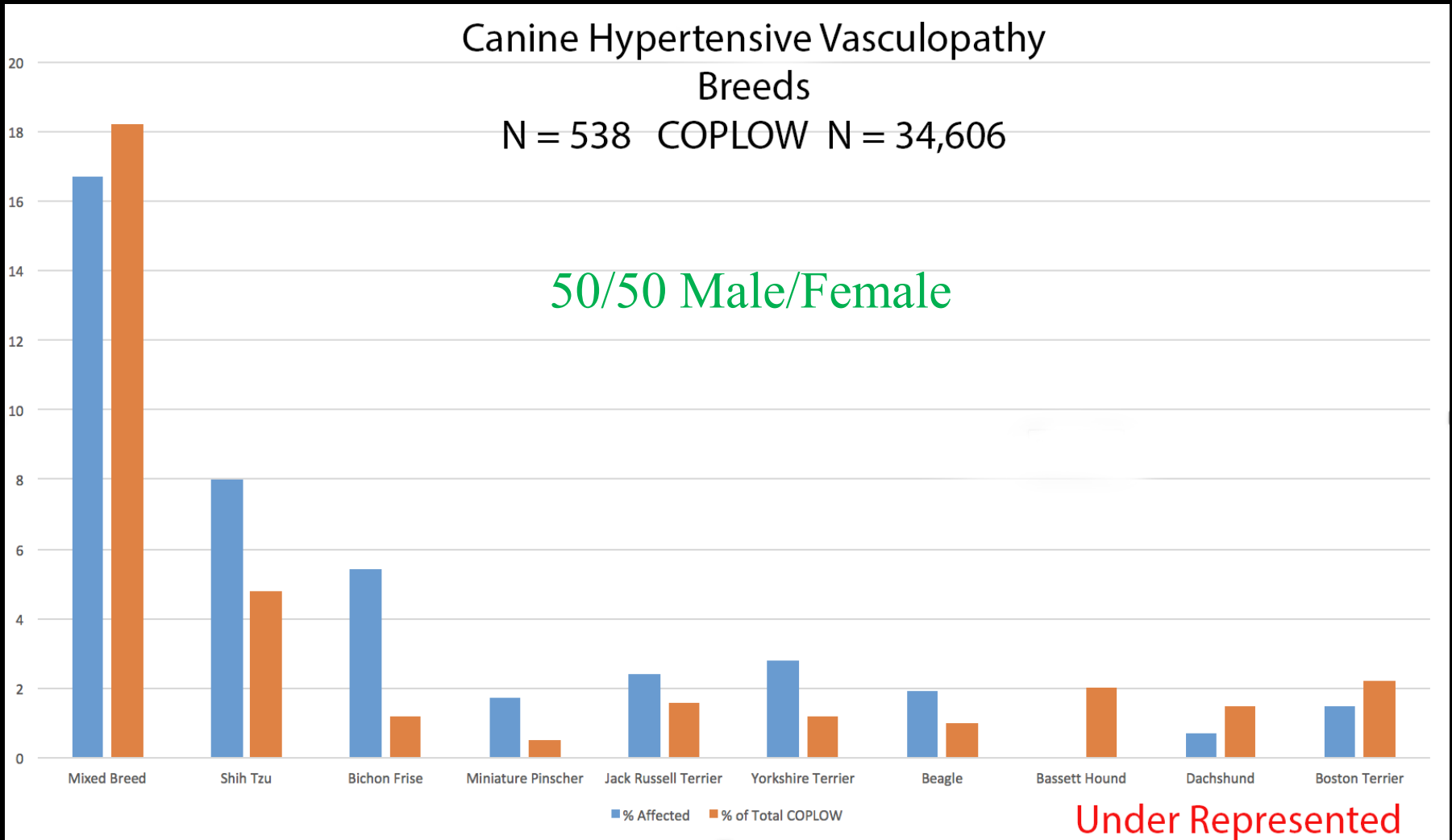
- 539 cases in the COPLOW database
- Zero cases less than 3 years-old
- 64.2% between 10 and 15 years-old
- 28 cases also have a diagnosis of atherosclerosis
  - Bichon, Min Pin, Shih Tzu, Ahasa Apso

# Canine Hypertensive Vasculopathy

## Canine Hypertensive Vasculopathy Breeds

N = 538 COPLOW N = 34,606

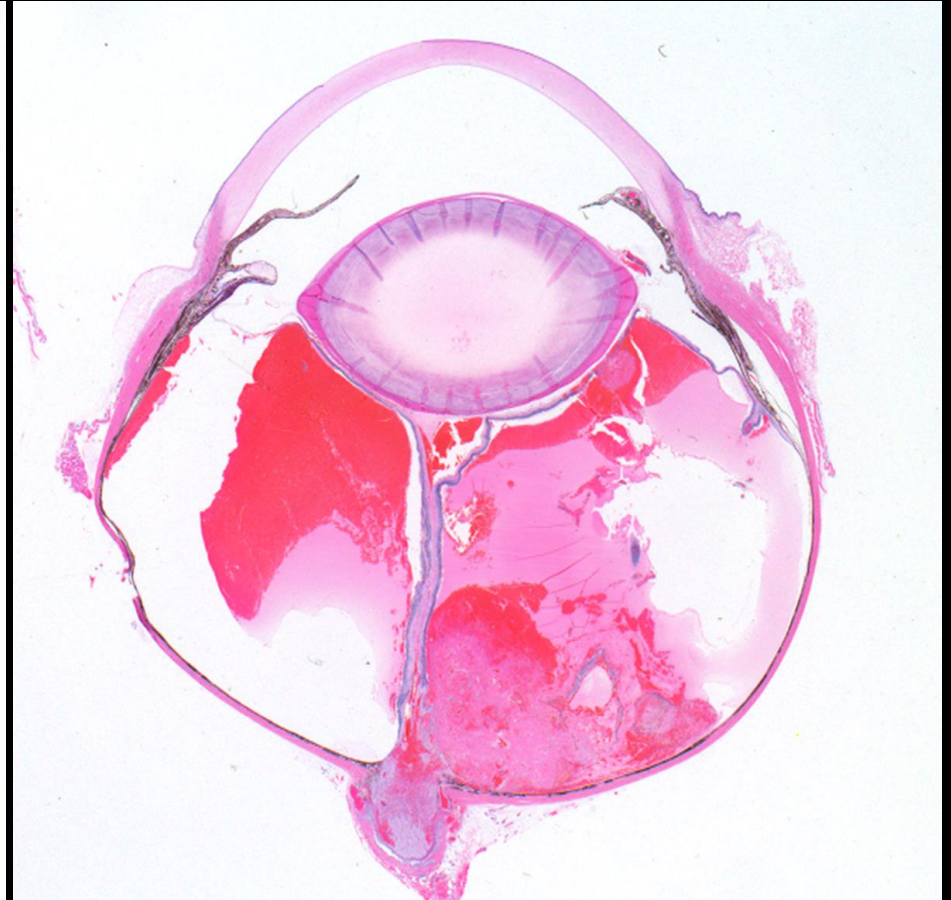
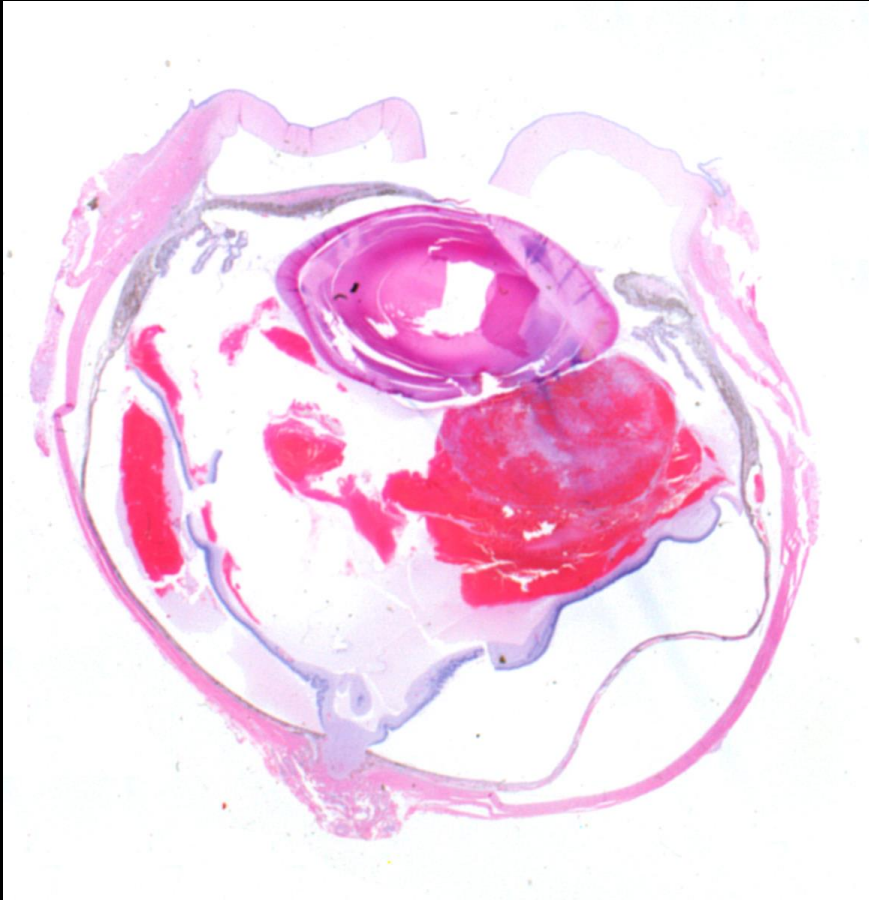
50/50 Male/Female



Under Represented

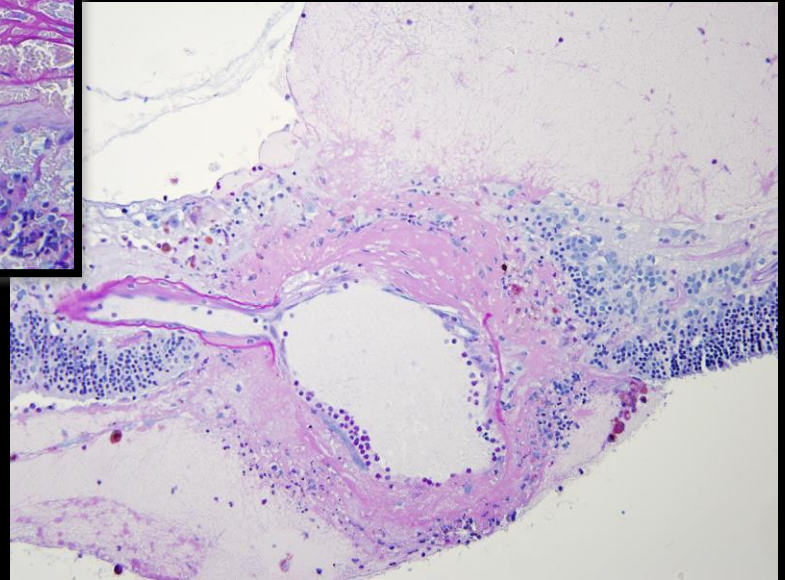
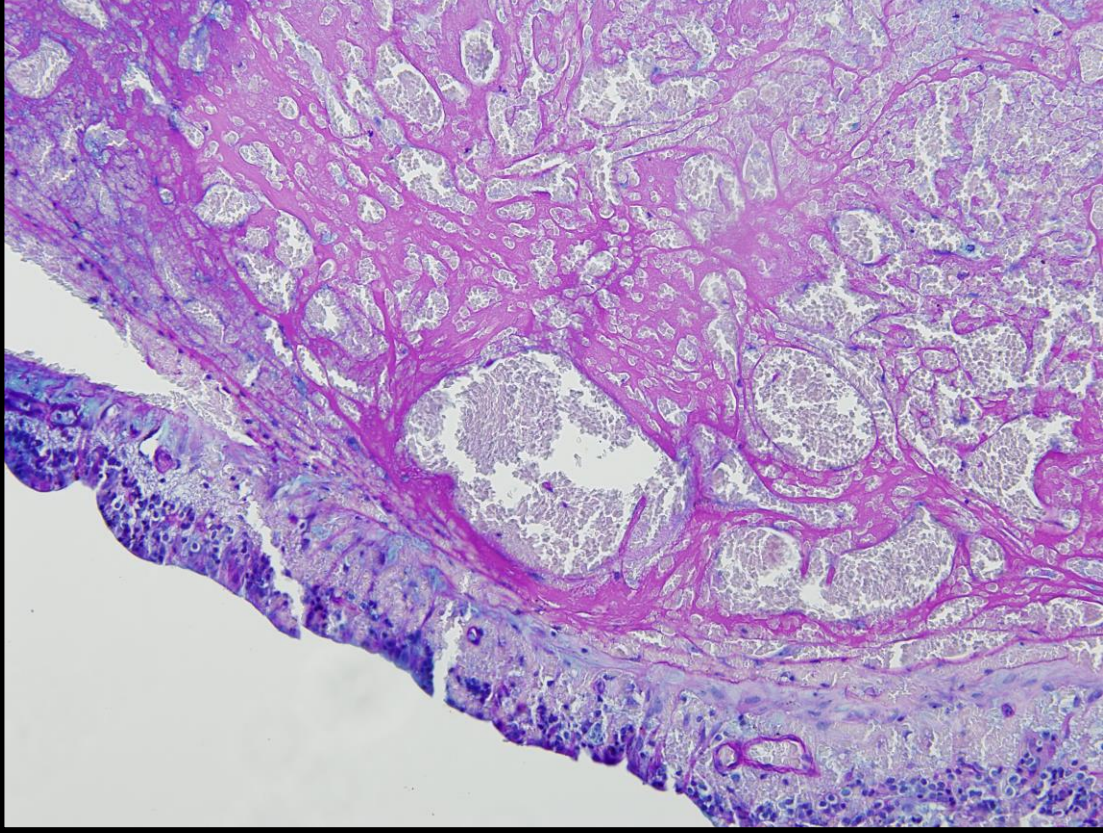
**Bichon Frise = 73% Male  
N = 32**

# Canine Hypertensive Vasculopathy

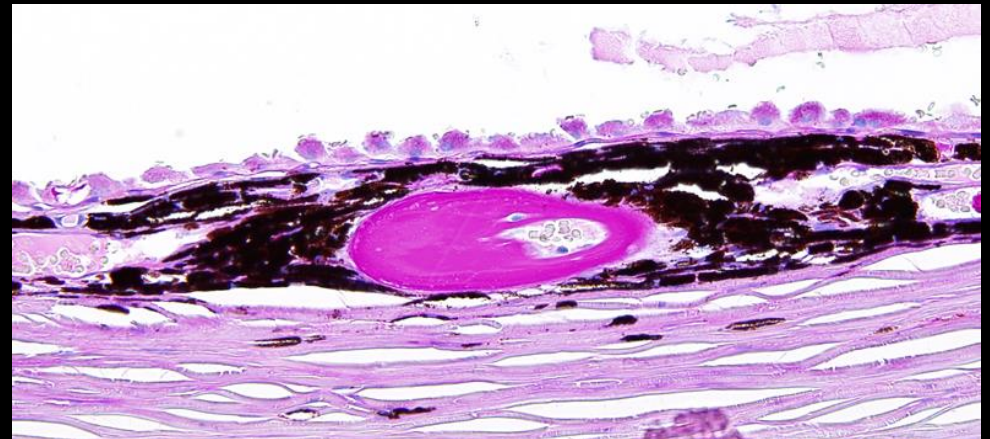
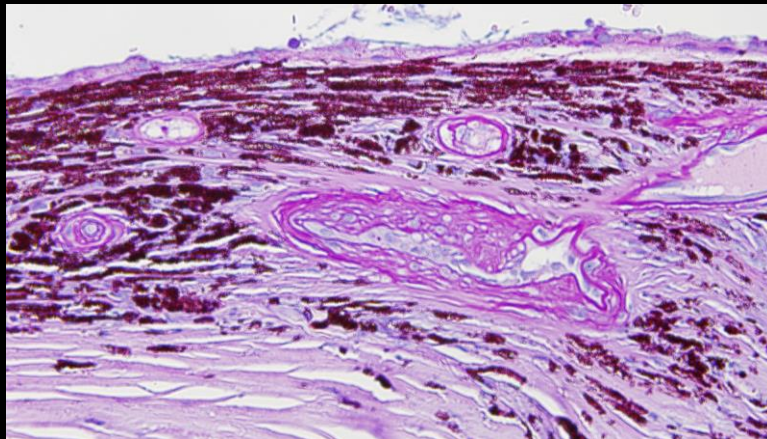
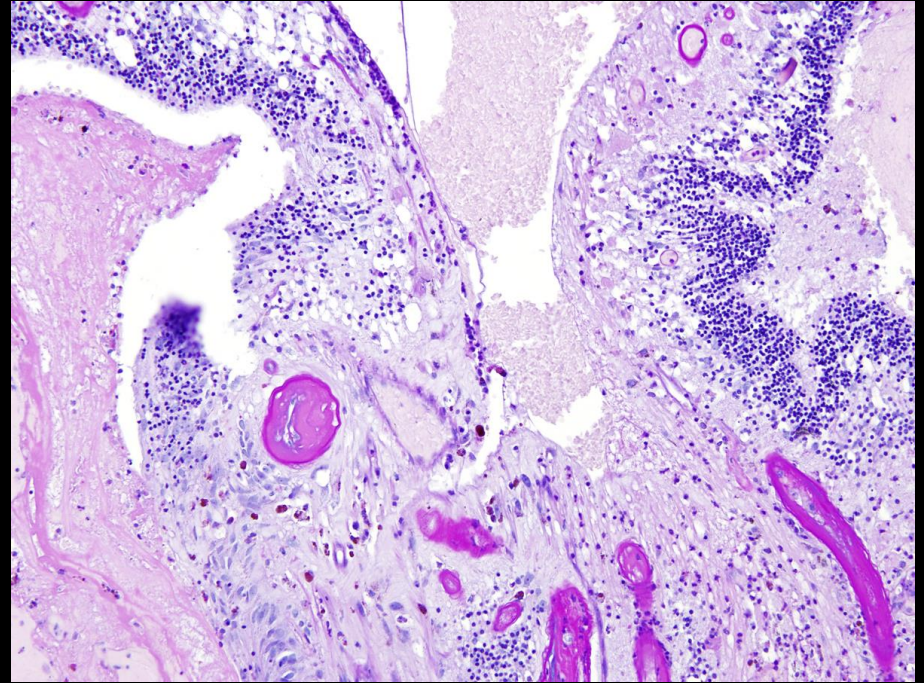
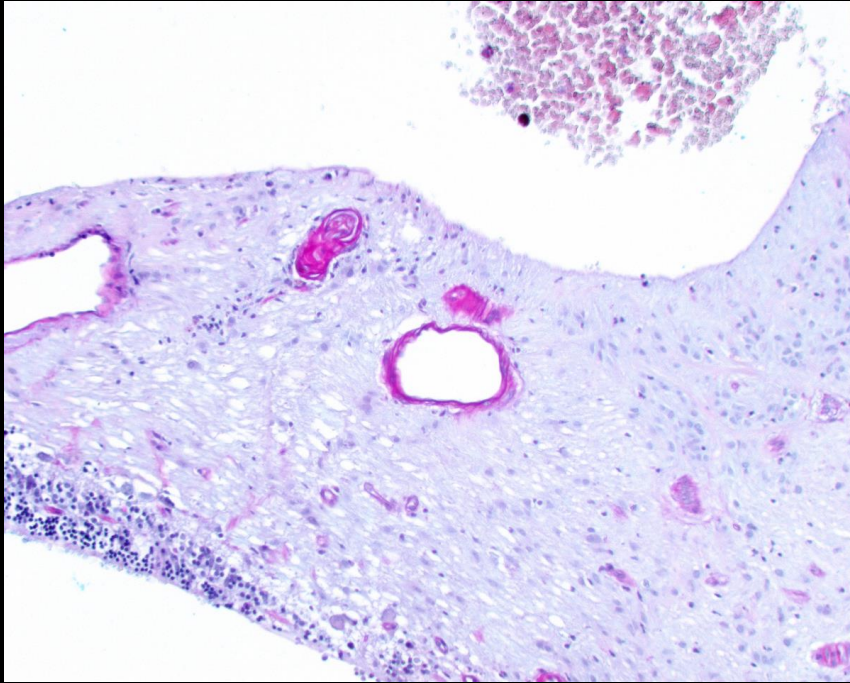




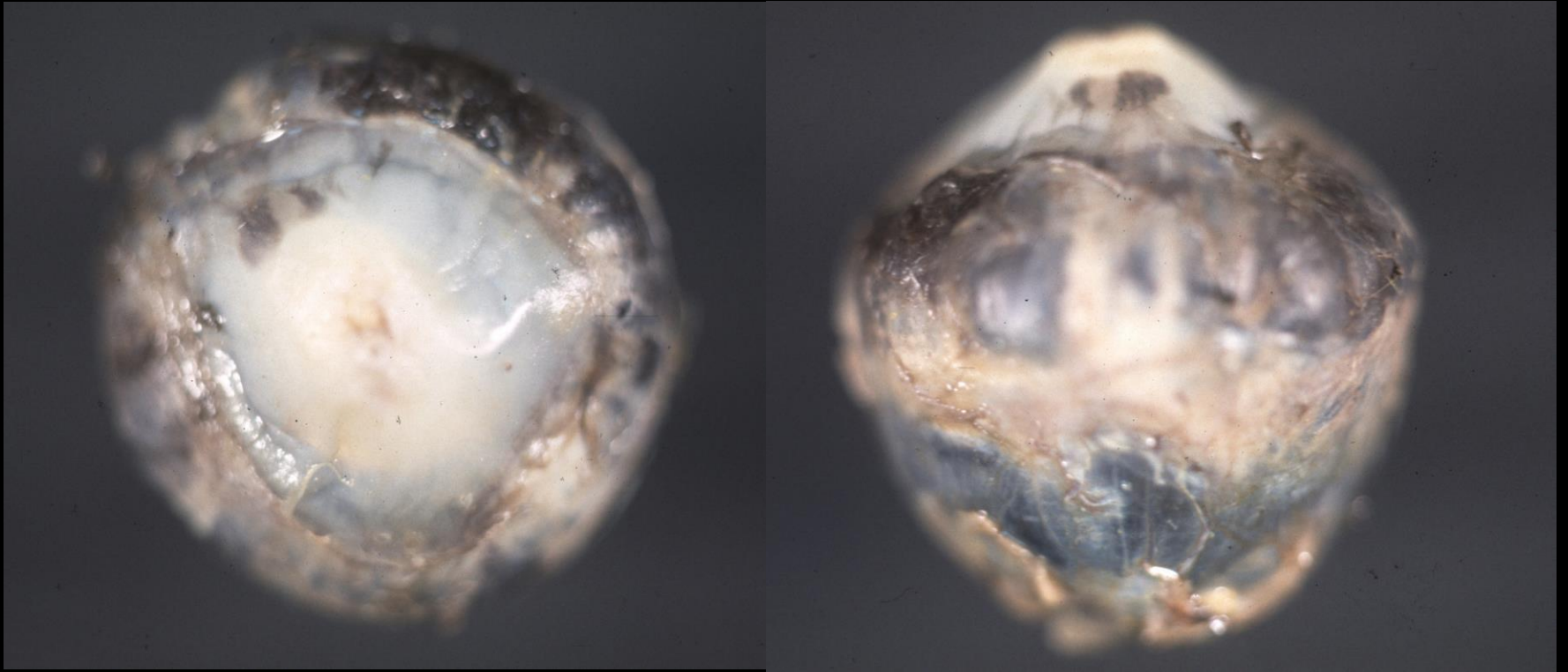
# Canine Hypertensive Vasculopathy



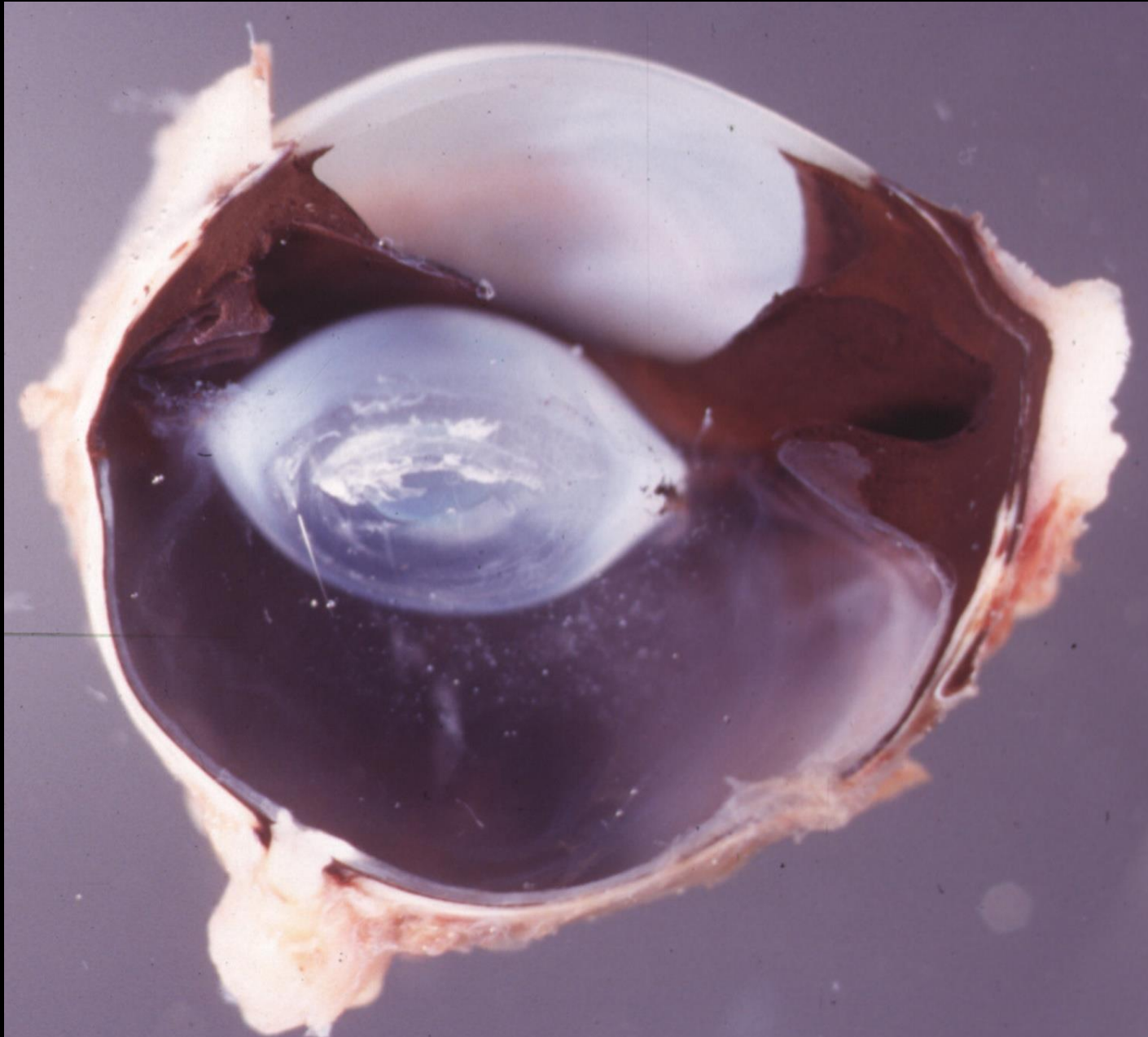
# Canine Hypertensive Vasculopathy



# Ocular Melanosis

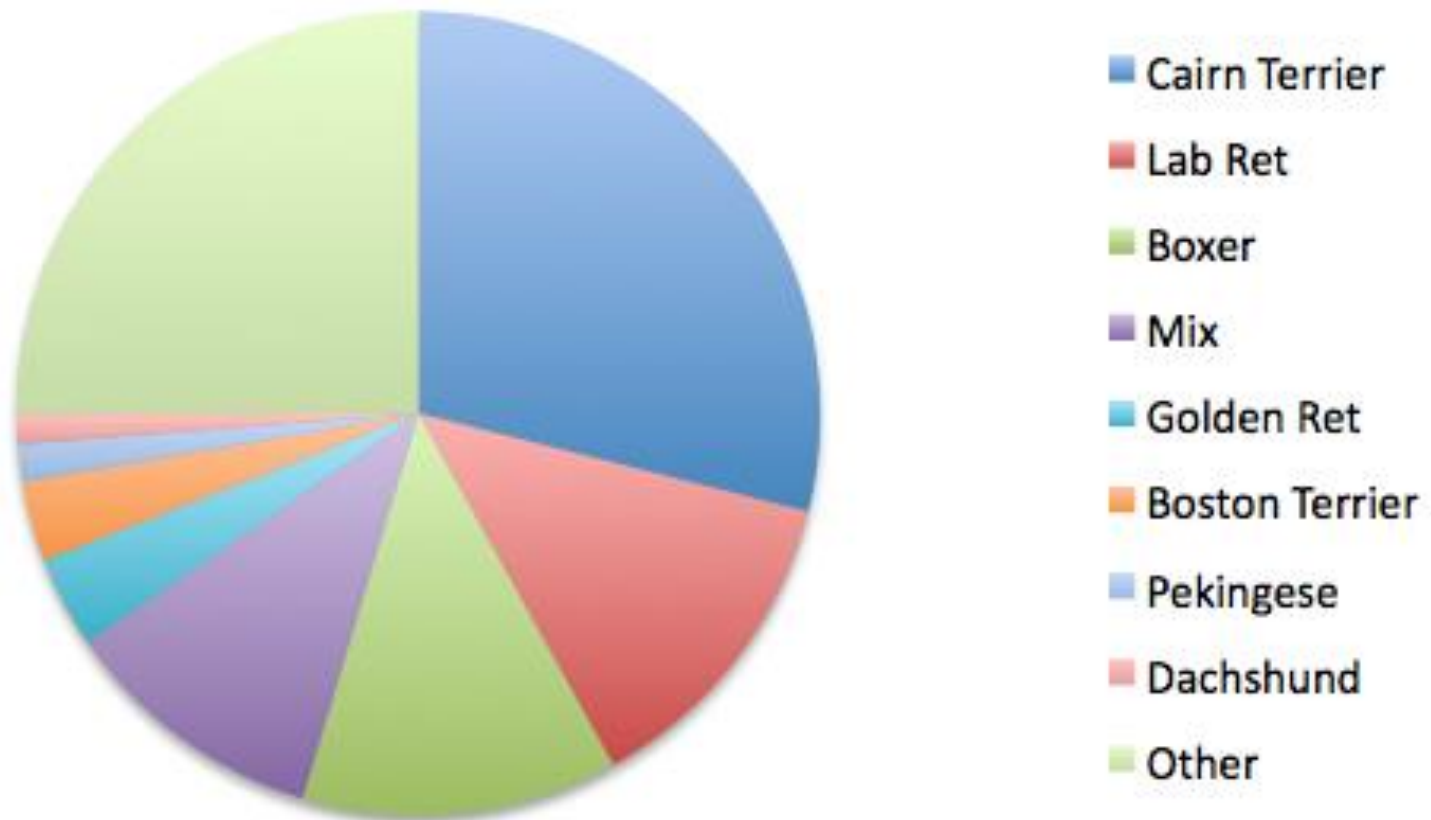


# Ocular Melanosis

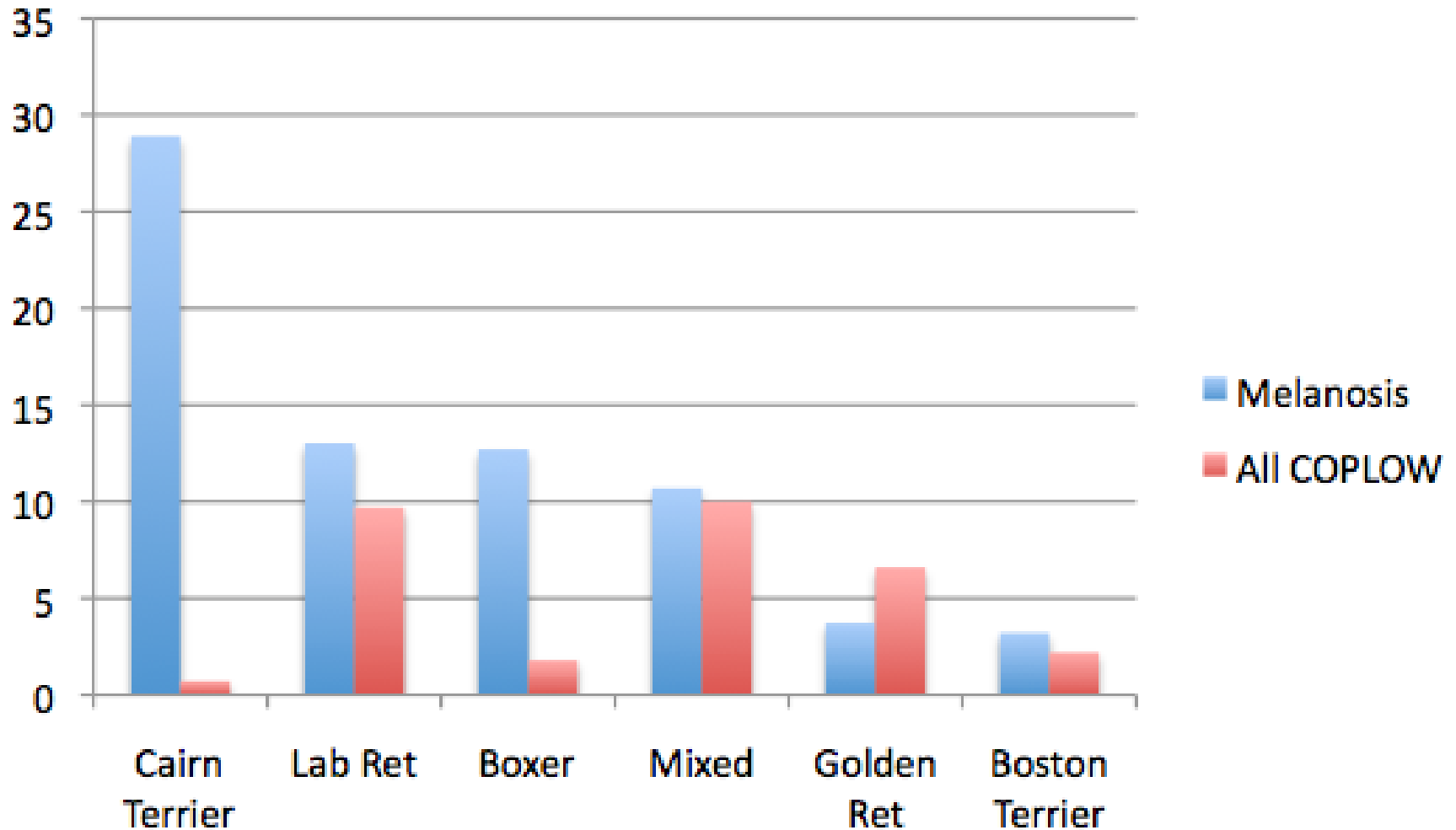


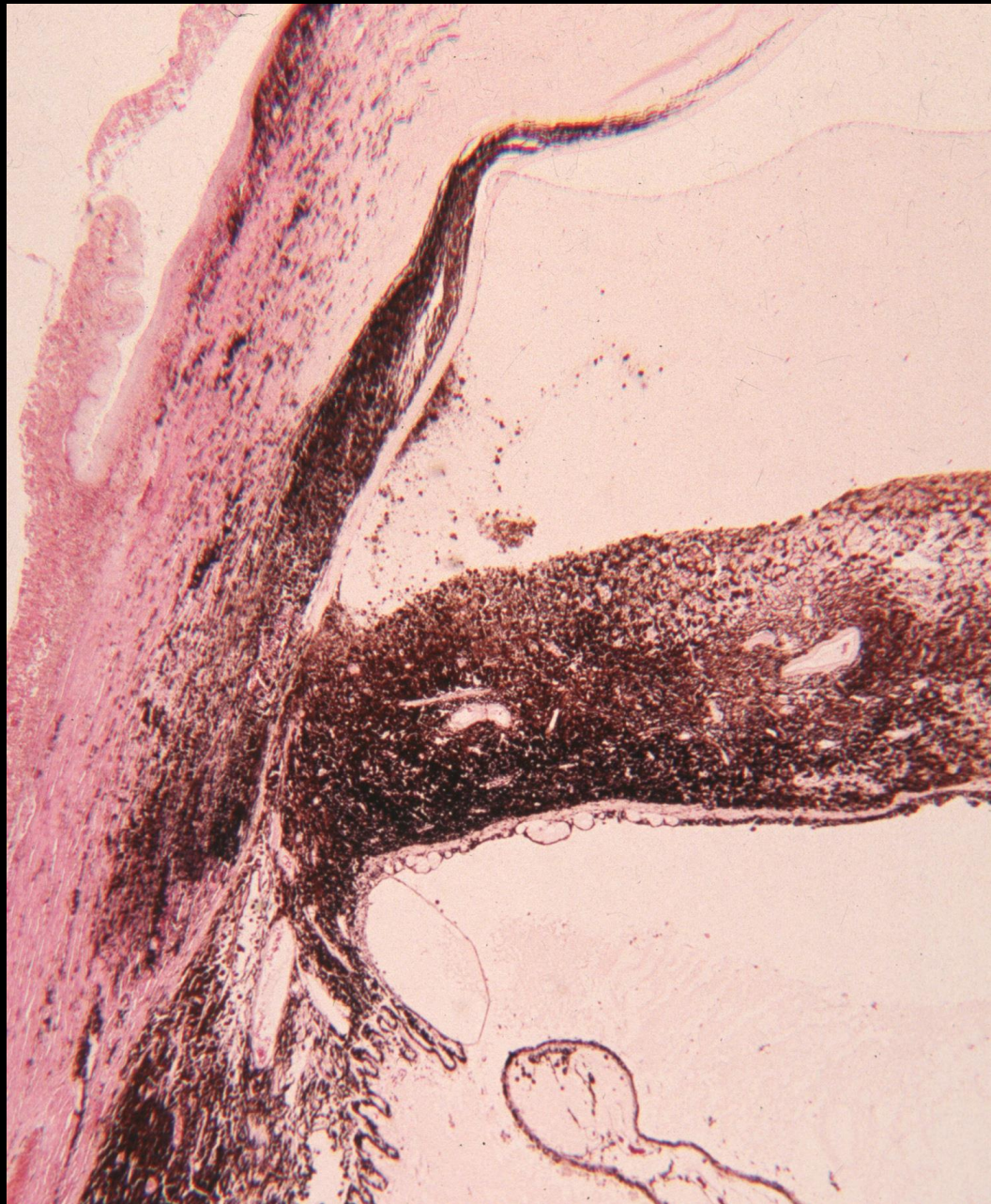
# Canine Ocular Melanosis

**% of Canine Melanosis n=401**



# Ocular Melanosis







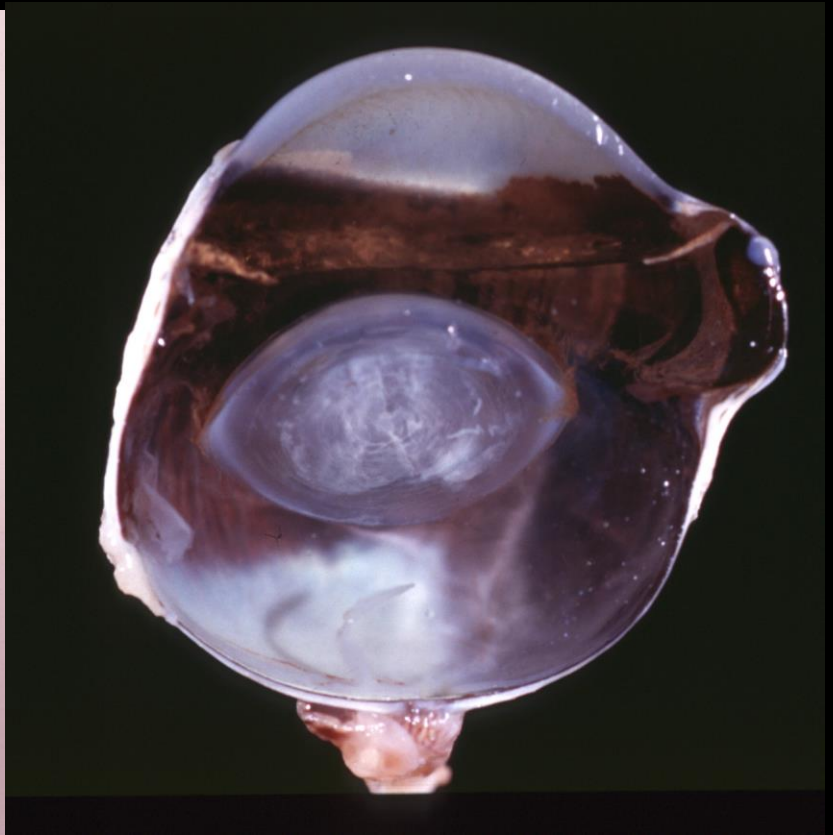
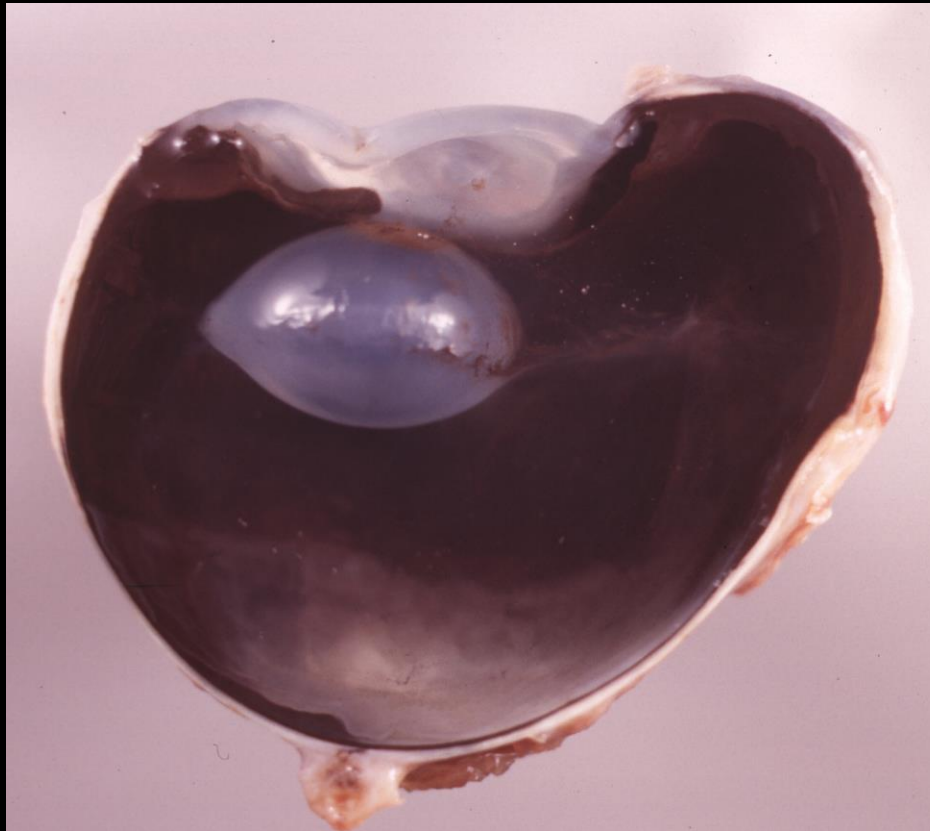






# Acquired Staphyloma in melanotic conditions with glaucoma





# The Glaucoma Diseases in Cats

- Lymphoplasmacytic Uveitis
- Angle Recession (Contusion)
- FDIM
- Aqueous Misdirect Syndrome

