

MILK QUALITY INVESTIGATION CHECK SHEET

HERD FINANCIAL DETAILS

Name: Address:	Veterinarian: Address:
Telephone:	Telephone
DHIA Y/N Herd Codes:	Date of Visit: ETA:
Breed:	No. of Milking cows:
RHA milk/cow/year (lbs):	No. of Dry Cows:
Milk shipped / year (lbs):	No. of Culls for mastitis in last 12 months:
	Cull Cow Price \$/lb:
	Average weight of Cull Cow (lbs):

MILK SALES

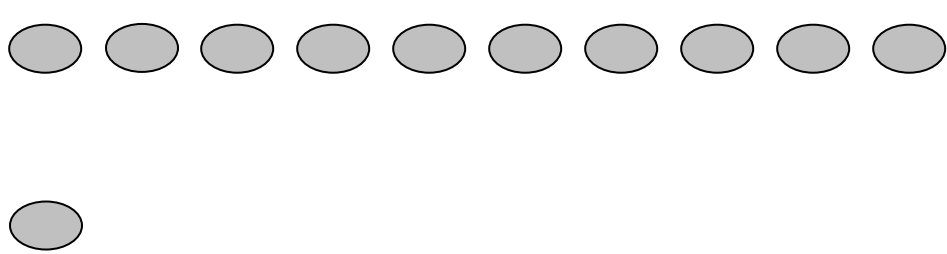
Milk Processor:	SCC Details	SPC Details
	Mean SCC	Mean SPC
Average Milk Price \$	Goal SCC	Goal SPC
@ % Fat	Mean SCC Premium	Mean SPC Premium
@ % Protein	Goal SCC Premium	Goal SPC Premium

SEASONAL TRENDS

Record Annual variation in SCC, SPC and Mastitis case incidence

900													45
800													40
700													35
600													30
500													25
400													20
300													15
200													10
100													5
	Jan	Feb	Mar	Apr	May	Jun	Jul	Aug	Sep	Oct	Nov	Dec	

MILKING PROCEDURES

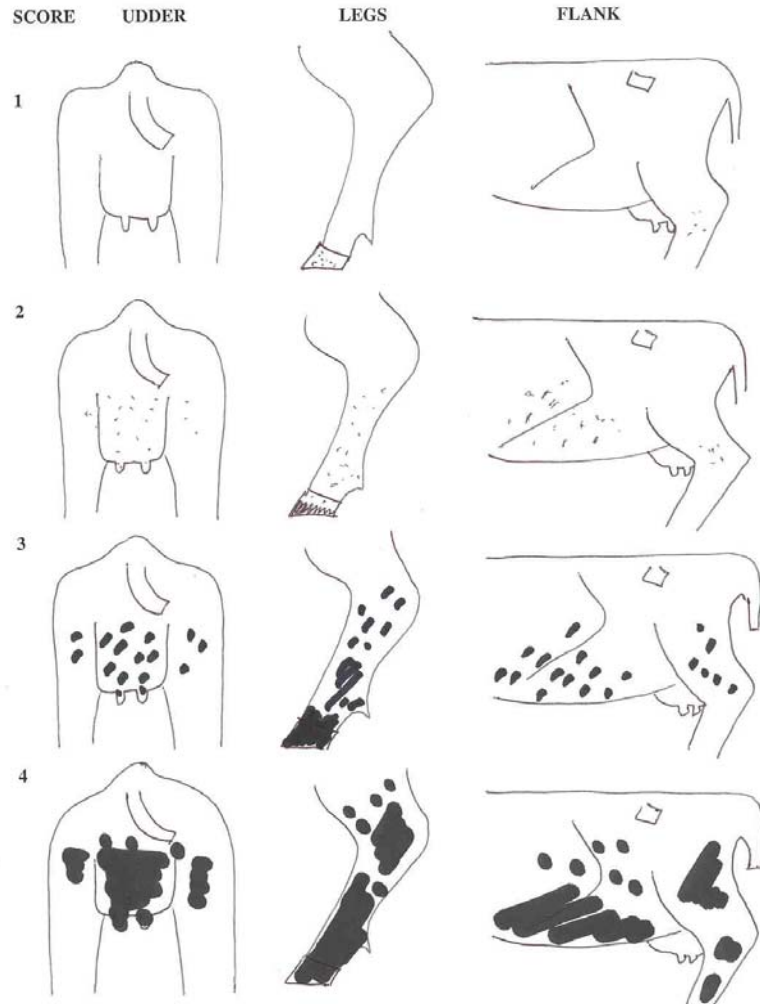
MILKING TIME									
	TIME TAKEN	NO. OF MILKERS	COWS /MILKER /HOUR	MILKING ORDER F H L T ST					
AM START									
AM STOP									
PM START									
PMSTOP									
3X START									
3X STOP									
UDDER PREPARATION									
PRE-MILKING			POST-MILKING						
Pre-dip Product			Post-dip Product						
Application	Dip / Spray / Foamer		Application	Dip / Spray					
Wipe	Paper / Cloth /		Delay to dip	Short / Long					
Strip	Y/N		Coverage % teat						
	Floor / Cup		Dip Usage / week						
Gloves	Y/N		Cold Weather?						
	Type		Unit Detacher Settings	Delay					
Udder	Clipped / flamed / hairy			Flow Rate					
Tails	Docked / clipped / hairy			Ohm Setting					
PREPARATION SEQUENCE									
Strip Dip Wipe Apply		1 2 3 4 5 6 7 8	Dip Strip Wipe Apply						
									
MILKER PERFORMANCE (1=Poor, 2=OK, 3=Good)									
	Milker 1			Milker 2			Milker 3		
Observe foremilk	1	2	3	1	2	3	1	2	3
Pre-Dip coverage	1	2	3	1	2	3	1	2	3
Air at attachment	1	2	3	1	2	3	1	2	3
Alignment of unit	1	2	3	1	2	3	1	2	3
Machine stripping	1	2	3	1	2	3	1	2	3
Detachment	1	2	3	1	2	3	1	2	3
Post-Dip coverage	1	2	3	1	2	3	1	2	3
Glove Hygiene	1	2	3	1	2	3	1	2	3
Correct Liner Slip	1	2	3	1	2	3	1	2	3

MILKING ROUTINE DATA COLLECTION FORM

COW	STIM START (DIP OR STRIP) A	DIP ON B	DIP CONTACT C-B	DIP WIPE C	STIM-UNIT-ON TIME D-A	UNIT ON D	LET DOWN AT 30S Y/N	MILK TIME E-D	UNIT OFF E	MILK (LBS)	RESI MILK (CC)	LINER SLIPS	POSITION IN PREP SEQUENCE
MEAN													
GOAL			30SECS		90 SECS						250CC	<5/100	
SIDE	START COW ENTRY A	1 ST COW PREP B	1 ST UNIT ON C	ALL UNITS ON D	ALL UNITS OFF E	ALL COWS OUT F	PREP TO ATTACH C-B		ALL UNITS ON D-A		MILKING TIME E-D		TURN TIME F-A
								1.30		4.00		10	12-15
								1.30		4.00		10	12-15
								1.30		4.00		10	12-15
								1.30		4.00		10	12-15
								1.30		4.00		10	12-15
								1.30		4.00		10	12-15
								1.30		4.00		10	12-15
								1.30		4.00		10	12-15
								1.30		4.00		10	12-15
								1.30		4.00		10	12-15
								1.30		4.00		10	12-15
								1.30		4.00		10	12-15


HYGIENE SCORING (Score 25% of cows in each pen)

Key:



COW	UDDER	LEGS	FLANK	COW	UDDER	LEGS	FLANK
	1 2 3 4	1 2 3 4	1 2 3 4		1 2 3 4	1 2 3 4	1 2 3 4
	1 2 3 4	1 2 3 4	1 2 3 4		1 2 3 4	1 2 3 4	1 2 3 4
	1 2 3 4	1 2 3 4	1 2 3 4		1 2 3 4	1 2 3 4	1 2 3 4
	1 2 3 4	1 2 3 4	1 2 3 4		1 2 3 4	1 2 3 4	1 2 3 4
	1 2 3 4	1 2 3 4	1 2 3 4		1 2 3 4	1 2 3 4	1 2 3 4
	1 2 3 4	1 2 3 4	1 2 3 4		1 2 3 4	1 2 3 4	1 2 3 4
	1 2 3 4	1 2 3 4	1 2 3 4		1 2 3 4	1 2 3 4	1 2 3 4
	1 2 3 4	1 2 3 4	1 2 3 4		1 2 3 4	1 2 3 4	1 2 3 4
	1 2 3 4	1 2 3 4	1 2 3 4		1 2 3 4	1 2 3 4	1 2 3 4
	1 2 3 4	1 2 3 4	1 2 3 4		1 2 3 4	1 2 3 4	1 2 3 4
	1 2 3 4	1 2 3 4	1 2 3 4		1 2 3 4	1 2 3 4	1 2 3 4
	1 2 3 4	1 2 3 4	1 2 3 4		1 2 3 4	1 2 3 4	1 2 3 4
	1 2 3 4	1 2 3 4	1 2 3 4		1 2 3 4	1 2 3 4	1 2 3 4
	1 2 3 4	1 2 3 4	1 2 3 4		1 2 3 4	1 2 3 4	1 2 3 4
	1 2 3 4	1 2 3 4	1 2 3 4		1 2 3 4	1 2 3 4	1 2 3 4
	1 2 3 4	1 2 3 4	1 2 3 4		1 2 3 4	1 2 3 4	1 2 3 4
	1 2 3 4	1 2 3 4	1 2 3 4		1 2 3 4	1 2 3 4	1 2 3 4
	1 2 3 4	1 2 3 4	1 2 3 4		1 2 3 4	1 2 3 4	1 2 3 4
% 3+4				% 3+4			

HOUSING (Bedded Pack)

PEN NUMBER			
TYPE OF COW	Lactating / Far Dry / Close Up Dry / Maternity / Post-Fresh		
NUMBER OF COWS		AREA	
Stocking Density			
Base	Concrete / Lime / Earth / Sand / Mat / Mattress	Manufacturer:	
Bedding	Type:	Depth:	Renewal:
Design & Dimensions			
			
Bedding Storage	Clean & Dry / Wet & Damp / Moldy		

HOUSING (Freestall)

PEN NUMBER			
TYPE OF COW	Lactating / Far Dry / Close Up Dry / Maternity / Post-Fresh		
TYPE OF HOUSING	Free-stall		
NUMBER OF COWS		NUMBER OF STALLS	
Stocking Density			
COWS STANDING IN STALLS		COWS TOUCHING A STALL	
Stall Standing Index	Cows Standing in Stalls / Cows in Stalls (<15%) =		
Base	Concrete / Lime / Earth / Sand / Mat / Mattress		Manufacturer:
Bedding	Type:	Depth:	Renewal:
% Beds with Manure Piles		Frequency of Passageway Scraping / Flushing	
Design & Dimensions			
Bedding Storage	Clean & Dry / Wet & Damp / Moldy		
% Cows with hock abrasions			

HOUSING (Tiestall / Stanchion)

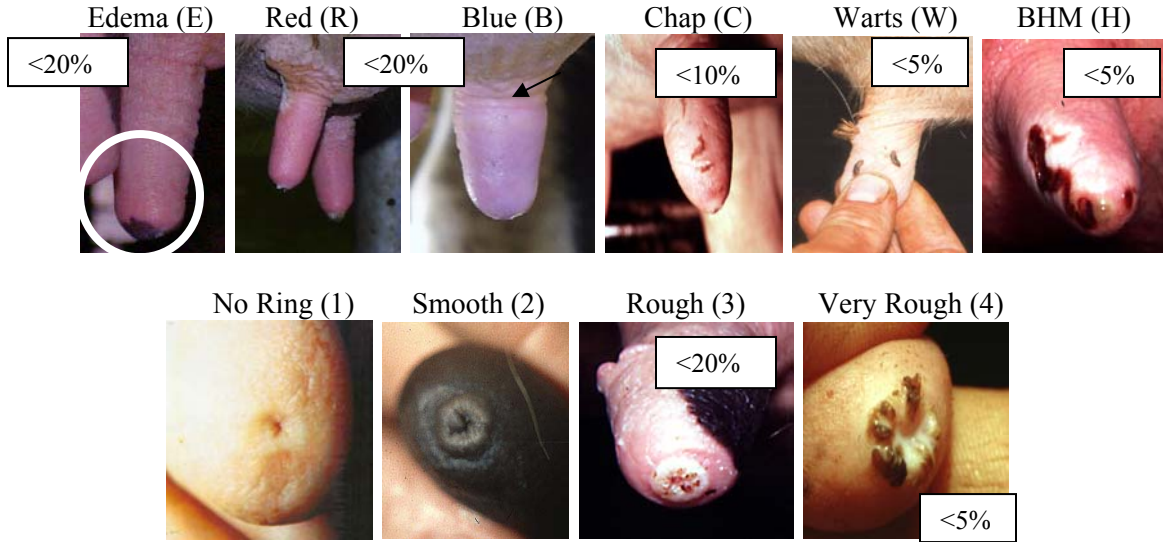
PEN NUMBER			
TYPE OF COW	Lactating / Far Dry / Close Up Dry / Maternity / Post-Fresh		
TYPE OF HOUSING	Stanchion / Tie-Stall		
NUMBER OF COWS		NUMBER OF STALLS	
Stocking Density			
Base	Concrete / Lime / Earth / Sand / Mat / Mattress	Manufacturer:	
Bedding	Type:	Depth:	Renewal:
% Beds with Manure Piles			
Design & Dimensions	<p style="text-align: center;">Neck chain length to collar =</p>		
Bedding Storage	Clean & Dry / Wet & Damp / Moldy		
% Cows with hock abrasions			

MILKING MACHINE CHECK SHEET

Machine test frequency:		Date of Last test:	
Machine manufacturer:		Age:	
Basic Layout:			
Rubberware	Milk hose / Pulsator hose / Short milk tube / Short Pulsator tube		
Liner Life: Last changed ____ Expected Life = 1000 X units () / Cows () x 2* = days			
Liner type:		Shell type:	
Mouthpiece diameter:		Bore:	Length:
Milk Line:	Slope:	Diameter:	Units/Slope: Actual Allowed
Inlet Size: (5/8")		Location:	
Claw Piece Type:		Weight:	Outlet Diameter(5/8")
Top or Bottom unloading?			
Cracks?:		Hygiene?:	Air Bleeds Open?:
Regulator Type:		Sensor?	Hygiene:
Location:		Pop off valve?	
Vacuum Recovery Time:		(<3sec)	Override: (<0.5")

TEAT END SCORING (Score 20% cows in each pen)

Score: Color: R (Red) B (Blue) Black (Bl) and Mouthpiece mark at teat base (M) ↑



Cow ID	Lesion		Cow	Lesion		Cow	Lesion	
	LF	RF						
	LR	RR						

Devised by Nigel B. Cook UW-Madison, using the guidelines developed by the “Teat Club International”, 2002

CLEAN UP INVESTIGATION CHECK SHEET

LAB DATA	COLI COUNT		LPC	
Milk Filters: Condition		Frequency of change: (4h max)		
Hoses & Pipelines: Dead Ends?		Diameter changes? Y /T?		
Visible films:		Dissolve in acid / alkali		
Bulk Tank Type:		Visible films: Pick-up Temp: (below 38F in 30mins)		
Wash Procedure AM PM		Automated / Manual	Shock Treatments?	
Detergent Make:		Concentration:	Temperature Range:	
Acid Rinse Make:		Concentration:	Temperature Range:	
Capacity of Water tank:		Temperature:		
Capacity of Vat: L x W x H / 231 =		Gallons (x3.8 = Litres)		
(1" length = 1 gallon in most vats, 1.5 gallons in Surge vats, aim for 5" depth at all times during wash)				
Wash Procedure	Pre-milking Sanitizer	Pre-Wash Rinse	Detergent Wash	Acid Rinse
Start Temp				
End Temp				
Cycle Time				
Concentration				
pH				
Targets	200 ppm chlorine 95 – 110 °F	110 – 135 °F	> 120 °F 5 – 10 minutes pH 11 - 13	PH < 3 2 minutes 90 – 110 F
Unit Flow (aim 0.8 gallons/min)	Near Side 1 Side 2	Middle Side 1 Side 2	Far Side 1 Side 2	Other Side 1 Side2
Air Injection				
Time Open Actual:		Target: $\frac{\text{Distance from AI to REC}}{28 \text{ feet/sec}} = \text{-----} = \text{sec}$		
Measured Slug Velocity =		feet/sec Vacuum Drop = "Hg		
Injector Problems:	Does receiver fill > 1/3 during wash ? Does Sanitary Trap Valve close during wash ? Does > 5 gallons water drain from balance tank ? Does Air Injector close just before slug hits Receiver jar ?			

MASTITIS

LACTATION THERAPY	
Recognition: Clots Feel Filter In-Line	Identification:
Tube Insertion Technique: Milk Out: Disinfect: Alcohol: Full / Partial Insert: Massage: Dip:	Parlor Routine: Milk at end: Separate Cluster: How many : Used for fresh cows ? Disinfection:
Routine Protocol Oxytocin: Antibiotic IMM: Parenteral: Length of course: Withdrawal: Tested for residues? Test used: Other :	
Tubes used per year:	Estimated no. clinical cases per month:
CULTURE RESULTS	
Individual	Bulk Tank
Cow / Pathogen / Date	Pathogen / Dates
Drug Storage:	Drug labeling:
No. of residue failures in last 12 months :	
DRY COW THERAPY	
Tube Used:	All Cows ?
Technique: Milk Out Delay? Dip Wipe Alcohol Full / Partial Insert Dip Sealant? Where:	
J5 Vaccine Protocol:	

MASTITIS RECORD SHEET

Cow	Quarter(s) Affected	Dates of Treatment				Tube Used	Milk Out

CALIFORNIA MILK TEST WORKSHEET

COW	QUARTER SCORE				CULTURE	COMMENT
	LR	LF	RF	RR		