

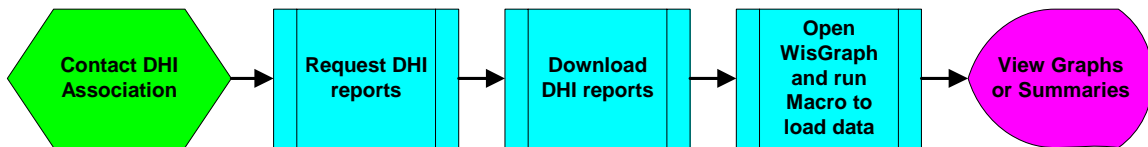
WisGraph 8.0 Operations

Ken Nordlund, DVM and Tom Bennett
School of Veterinary Medicine
University of Wisconsin-Madison

Introduction

The purpose of WisGraph 8.0 is to enhance the value of DHI records by graphically representing trends over time and providing innovative approaches to analysis of dairy herd performance.

WisGraph 8.0 is a Excel spreadsheet template. It is compatible with versions 97, 2000, 2002 and 2003 of Excel (Excel version 5.0 and 95 are no longer supported). Herd data is requested from AgSource using their DairyNet program. You can access the DairyNet Online Application using Internet Explorer. Specific data is requested using predetermined WisGraph file requests. Once the data has been downloaded, it is moved into the WisGraph 8.0 template. The reports are generated automatically and can be viewed on screen or printed.



All of the necessary software may be obtained from AgSource. For more information regarding DairyNet and AgSource visit their web site: <http://www.agsource.com/inetprod.htm>



Figure 1. DairyNet Main Menu Screen

WisGraph 8.0 Basic Reports

WisGraph8.0 generates 24 graphs from herd and cow information utilizing 20 WisGraph requests for specific data. In addition, WisGraph will summarize somatic cell count information from herd DHI data. Cows are listed with their somatic cell counts for the past six months. Bulk tank contributions of each cow are calculated and listed. Summary pages report and graph the prevalence and incidence rates of somatic cell counts > 200,000 in the herd for the past six months.

Listed below are the names of the data requests in DairyNet. The requests must be submitted to AgSource and the resulting reports downloaded prior to using WisGraph.

Name of Requests for WisGraph 8.0	Sort order	Selection Criteria
WisGraph Request09.CW0	Lactation – descending	
WisGraph Request01.CW1	None	DIM>1
WisGraph Request02.CW2	Current age at calving	Lactation=1
WisGraph Request03.CW3	Previous ME305	Previous ME305>=1 and Sire PTA milk lbs <>0
WisGraph Request04.CW4	Calf due date	Diagnosed Preg=Y
WisGraph Request05.CW5	DIM	DIM>=1 and Milk>=1
WisGraph Request06.CW6	Times bred	Times Bred>=1
WisGraph Request07.CW7	DIM	Lactation>=1, DIM>50, DIM<365
WisGraph Request08.CW8	DIM	Status Code=21-28
WisGraph Request10.HD1	Test Date – descending	
WisGraph Request11.HD2	“	
WisGraph Request12.HD3	“	
WisGraph Request13.WL1	Lactation, BarnName	Negative test count=-1
WisGraph Request14.WL2	“	Negative test count=-2
WisGraph Request15.WL3	“	Negative test count=-3
WisGraph Request16.WL4	“	Negative test count=-4
WisGraph Request17.WL5	“	Negative test count=-5
WisGraph Request18.WL6	“	Negative test count=-6
WisGraph Request19.WL7	“	Negative test count=-7
WisGraph Request20.WLD	BarnName	

To Send Requests:

Choose Send Requests from the DairyNet Menu. Click the WisGraph All>> button. A list of requests will then be in the Send Request List Box. Click the Submit button. Requests may take minutes or hours to complete depending on herd size and AgSource computer usage.

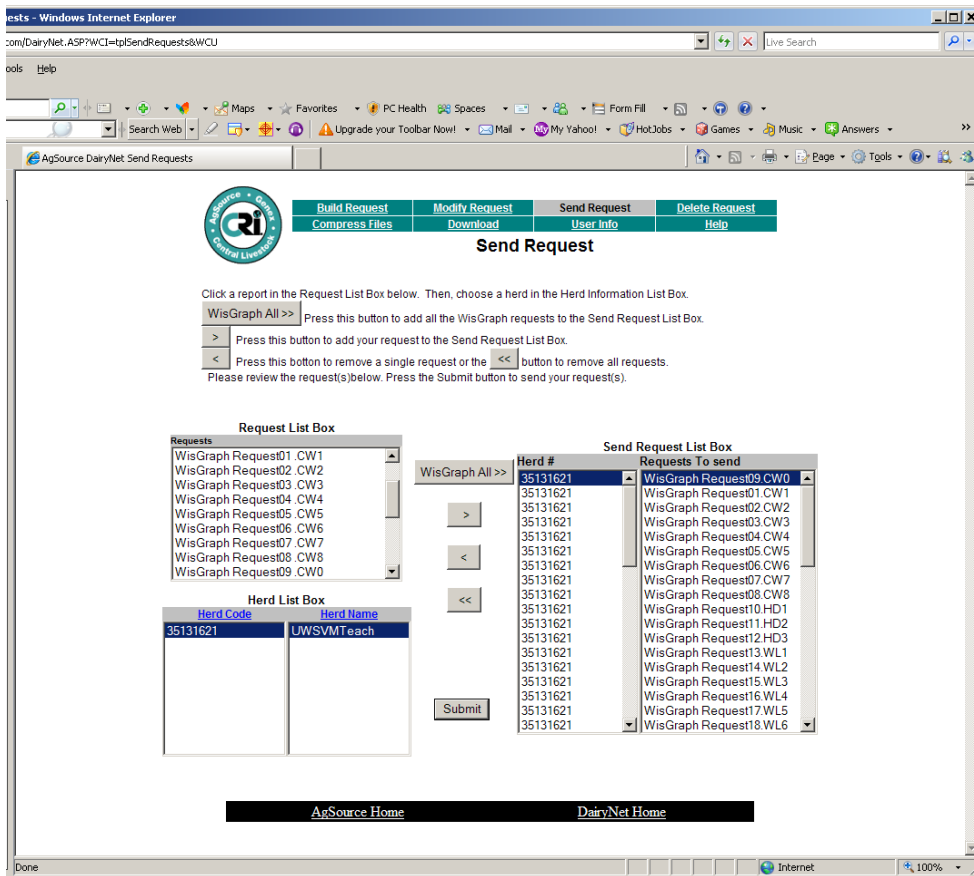


Figure 2. Send Requests Dialog Box

To Download Reports:

Click Download, then select Your own library and click Enter. This will show you the list of requested files eligible for download. To download individual files, right click on the file name and choose Save Target As...



Build Request	Modify Request	Send Request	Delete Request
Compress Files	Download	User Info	Help

Download Files

The following files are in folder 760.

Note: It may take several minutes to process your request and send it back to the Server. Please press the REFRESH button on the menu bar to refresh your screen and check if the report is ready.

To download a file : perform a right or left click, depending on your mouse setting, on the file link. A drop down window will be shown. Choose 'SAVE TARGET AS' and pick a directory on your computer to save the file.

To download multiple files, please click the COMPRESS FILES in the menubar. Create a self-extracted file from there. Then back to this page to download the self-extracted file.

For a faster way to delete multiple files, click [HERE](#).

Note: Your folder can store a maximum 100 files only.

File Name	Size	Date & Time	View Report	Check to Delete
141363al.exe	425369 bytes	4/18/2005 10:59:44 AM		<input type="checkbox"/>
35141363.CW1	79720 bytes	4/18/2005 10:43:24 AM	View	<input type="checkbox"/>
35141363.CW2		4/18/2005 10:43:48 AM	View	<input type="checkbox"/>
35141363.CW3		4/18/2005 10:44:16 AM	View	<input type="checkbox"/>
35141363.CW4		4/18/2005 10:44:40 AM	View	<input type="checkbox"/>
35141363.CW5		4/18/2005 10:45:28 AM	View	<input type="checkbox"/>
35141363.CW6		4/18/2005 10:45:52 AM	View	<input type="checkbox"/>
35141363.CW7		4/18/2005 10:46:16 AM	View	<input type="checkbox"/>
35141363.CW8		4/18/2005 10:47:04 AM	View	<input type="checkbox"/>
35141363.CW9		4/18/2005 10:47:54 AM	View	<input type="checkbox"/>
35141363.CW10		4/18/2005 10:48:18 AM	View	<input type="checkbox"/>
35141363.CW11		4/18/2005 10:48:42 AM	View	<input type="checkbox"/>
35141363.CW12		4/18/2005 10:49:06 AM	View	<input type="checkbox"/>
35141363.CW13		4/18/2005 10:49:54 AM	View	<input type="checkbox"/>

Figure 3. Save Target As.....

You may click Compress to store multiple files together in one for simpler download. Type the file name (8 characters) in the yellow text box. Then highlight the file names in the box below that you want to include by clicking on the first and dragging the mouse to the last. The text box will scroll automatically when dragging on the file names.

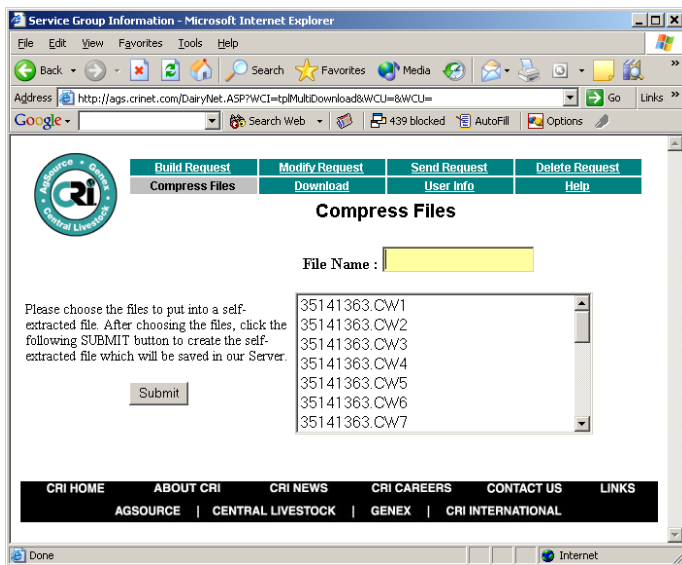


Figure 4. Compress Files

Click the Submit button to create the file. You will be returned to the download page and a new file will appear with an .exe extension. Click on that file to download. Once downloaded to your computer, be sure to double click on it to uncompress all of the data files. Download the requested files to a folder on your hard drive. WisGraph looks for data files in C:\dhidown by default but can be directed to where ever you store your files.

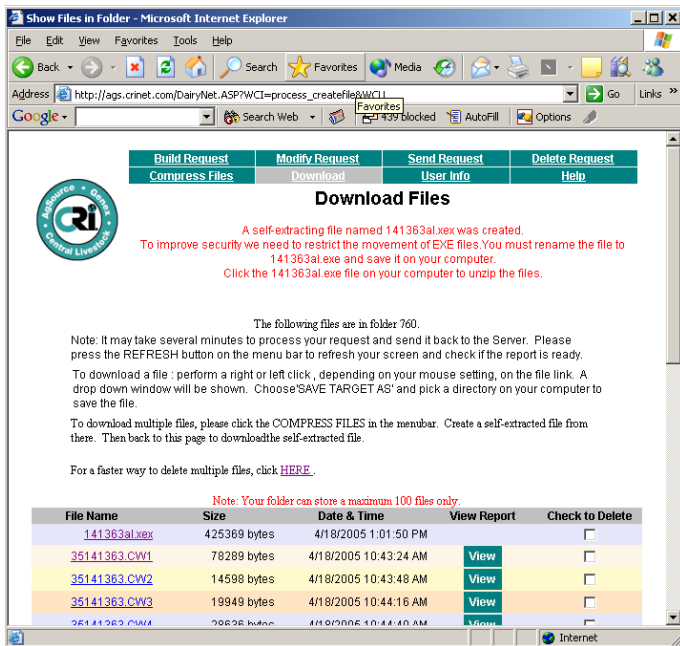
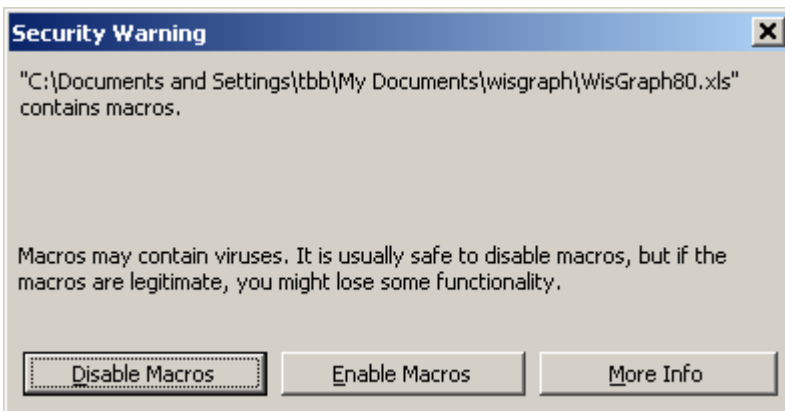


Figure 5. Download Compressed File (.xex)

Operation of WisGraph 8.0

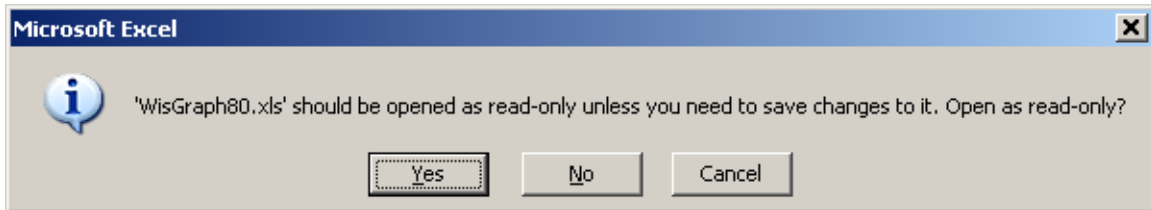
Open WisGraph 8.0 like any other Excel™ spreadsheet, choose file open, then point to the C:\wisgraph8 folder and choose WisGraph80.xls. When opening WisGraph80.xls, the user is guided through a series of steps via screen prompts. Fig. 6 below is the first prompt. The user should click the button labeled **Enable Macros** to allow the macros embedded in WisGraph80 to help the user. **Note: The security setting should be set to medium.**

Figure 6. Enable Macros Dialog box



The next dialog box to appear asks the user to open WisGraph80.xls as read-only. It is advisable to click **Yes** as seen in Fig. 7 to preserve the integrity of the WisGraph80.xls template for future use.

Figure 7. Open file as read-only?



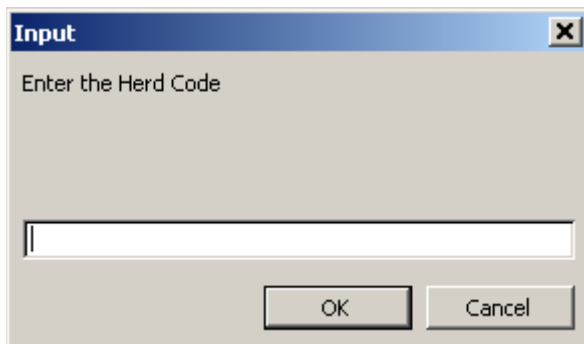
The third prompt to appear (Fig. 8) asks the user to enter the Farmer or Herd Name as it will appear on all of the graphs. Type the desired name and click **OK** or press Enter to continue.

Figure 8. Enter the Farm or Herd Name



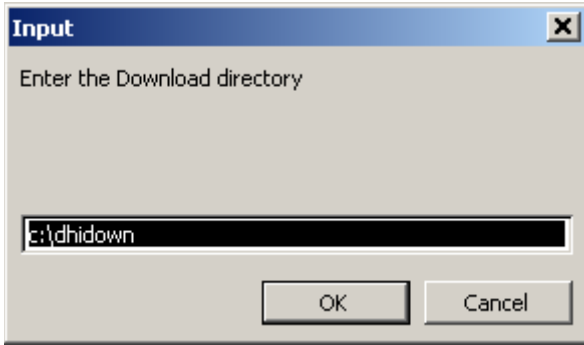
The fourth dialog box (Fig. 9) prompts the user to enter the 8 digit DHI herd code. Type the herd code and click **OK** or press enter.

Figure 9. Enter the Herd Code



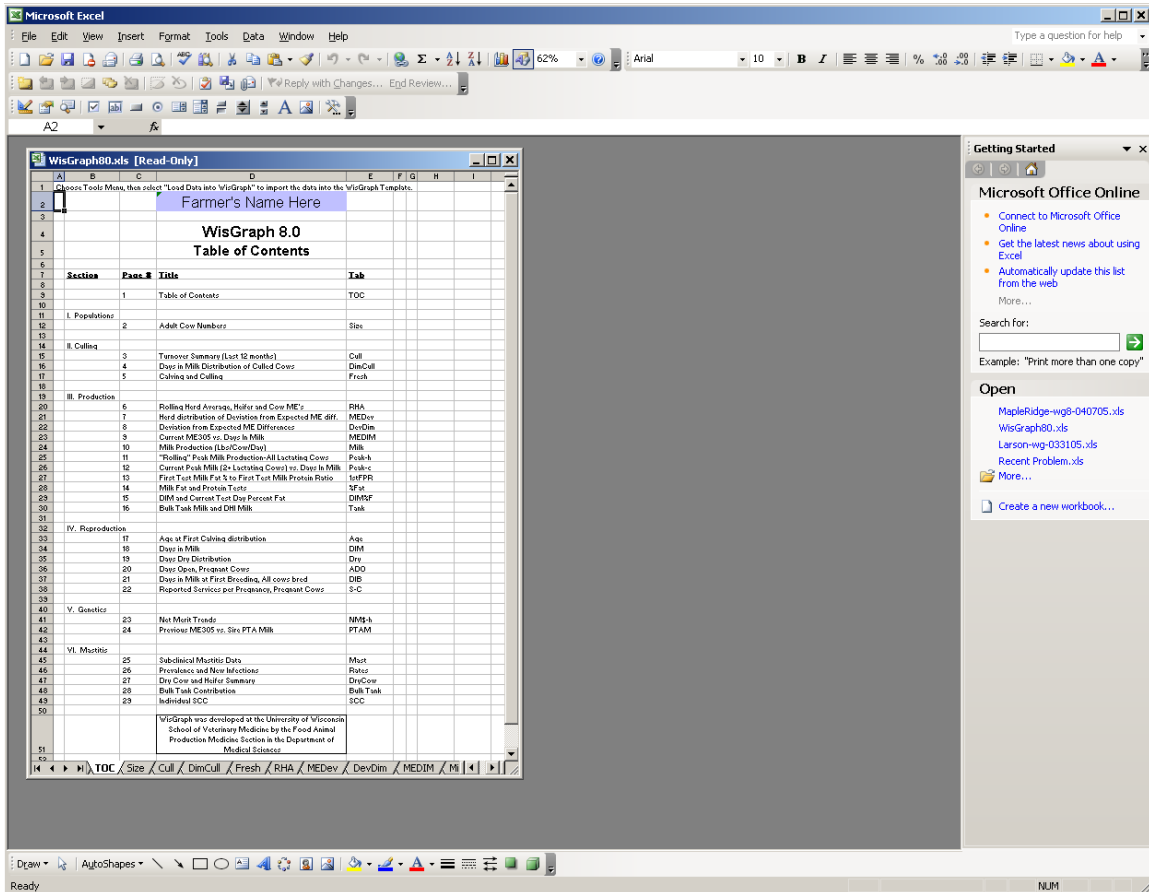
Next, the user is asked where the downloaded WisGraph reports are stored (Fig 10). These are the reports downloaded from AgSource after making the WisGraph data requests in DairyNet. The user must enter the directory in which the download files are stored in order for the macros that load the data into WisGraph to function properly. Type the path (drive:\folder name) and click **OK** or press Enter.

Figure 10. Enter the download location



Upon completion of the prompting sequence WisGraph8 is now ready to automatically load the data from the downloaded DairyNet reports (Fig. 13). To proceed, click the **T**ools menu, then click **Load Data into WisGraph** menu item. Automated data loading should ensue.

Figure 11. WisGraph after prompting completed



After the data has been loaded, you will be returned back to the Table of Contents page. The Table of Contents lists all reports, as well as the Tab Name of each. Click on the Tab Name to view individual graphs. The user may need to adjust some of the charts scales to more accurately reflect the herd's values. Click on the axis needing adjustment and then click **F**ormat

menu and click **Select axis**. Click the Scale tab and adjust the values as desired. Click OK to accept new values.

You have the option at this time to limit the number of graphs shown by clicking on the Tools menu and clicking one of the following subsets:

- View All Charts and Summaries – default
- View Mastitis Charts and Summaries – Mastitis group
- View Nutritional Charts – Nutrition group
- View Reproduction Charts – Reproduction group
- View All Charts, Summaries, and Data – default plus data sheets visible

You can print the current graph or summary by choosing the **File / Print** menu. To print multiple charts or summaries select the first worksheet tab, then hold the **Shift** key down while clicking the last worksheet tab. This will select the first and last worksheet along with all of the worksheets in between. If you want to select multiple nonadjacent worksheets hold down the **Ctrl** key while clicking the worksheet tabs instead of the **Shift** key. Then choose the **File / Print** menu.

Contacts for questions or support

If you have questions, please contact the appropriate person below. Best wishes.

DairyNet	WisGraph
Contact Diane Moll at AgSource:	Contact Tom Bennett at UW – SVM
AgSource	UW School of Veterinary Medicine
P.O. Box 930230	2015 Linden Dr West
Verona, WI 53593	Madison WI 53706
Phone: 608-845-1900	Phone: 608-262-5968
Phone: 1-800-236-0097	
Email: dmoll@agsource.com	Email: tbbennet@wisc.edu

To get WisGraph80, log on to the DairyNet program through www.agsource.com. Go to download files and select "MAIN" as the library to browse. From the file listing choose "WISGRAPH80.XEX" as the file to download. Right click on the file name and select "save Target As" from the submenu. You will need to change the file name to WisGraph80.exe in the dialog box and then download the file to your PC desktop. After you have downloaded the file you will need to unzip the file. Double click on the file name and a Winzip self-extractor window will pop up. Click on the "UNZIP" button and the Wisgraph80.xls file will be extracted into the C:\WisGraph8 folder. To start WisGraph, double click on the WisGraph80.xls file name.