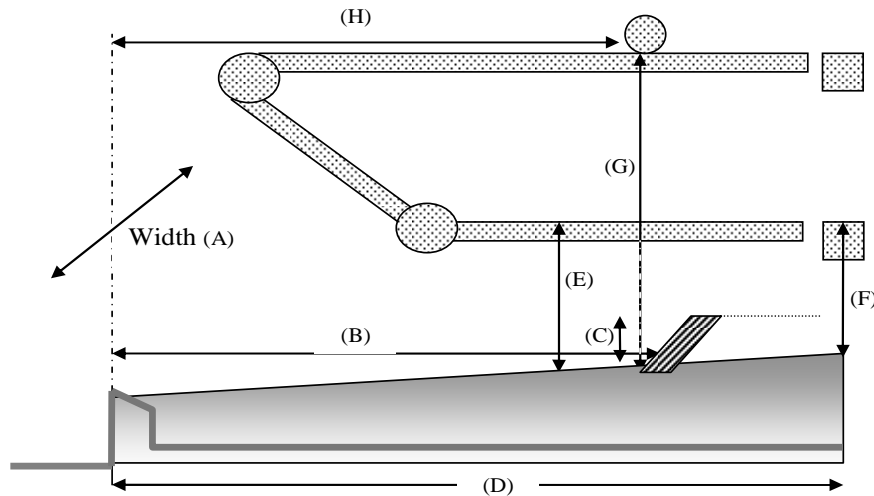


# Free Stall Evaluation Summary

University of Wisconsin-Madison

Client Name: \_\_\_\_\_

Date: \_\_\_\_\_



## GENERAL PEN DESCRIPTION

Parity of cows in pen				
# of cows in pen				
# rows of stalls				
Orientation (H/H or T/T; Center or Wall)				
# stalls in pen				
Feedline (Headlocks / post&rail)				
Total ft of bunk space				
Pen capacity, at 2.5 ft bunk / cow				

## STALL SURFACE

Stall surface				
Surface Cushion / Traction Assessment (Excellent / Good / OK / Poor)				
Bedding				
Type/Depth				

## RESTING AREA ASSESSMENT :

Stall width (A)				
Rear curb to brisket locator (B)				
Brisket locator height (C)				

## ROOM TO LUNGE:

Stall total length (D)				
Upper edge lower rail to stall surface (E)				
Room to lunge? (Front / Side / Both / Nowhere)				

## BOB ZONE ASSESSMENT:

Bob zone obstruction between 4 and 40" (F)				
Concrete fill in front of brisket locator? (Yes / No)				
Bob zone obstructions? (Lower / Upper / Both / None)				

## NECK RAIL ASSESSMENT:

Lower edge of neck rail to stall surface (G)				
Rear edge of curb to neckrail (H)				
Limitations to rising under neck rail? (Too low / Too near curb / Both / None)				

## OVERALL STALL ASSESSMENT:

Excellent / Good / OK / Poor				
------------------------------	--	--	--	--

## Dimensions for Free stalls 01/01/07

Stall Dimension (inches)	Body Weight Estimate (lbs)				
	1000	1200	1400	1600	1800
Total stall length facing a wall	96	96	108	120	120
Head to head platform length	192	192	204	204	216
Distance from rear curb to brisket locator	64	66	68	70	72
Stall divider placement on center (Stall width)	44	46	48	50	54
Height of brisket locator above stall surface	3	3	4	4	4
Height of upper edge of lower divider rail above stall surface	10	10	11	12	12
Height below neck rail	44	46	48	50	52
Horizontal distance between rear edge of neck rail and rear curb	64	66	68	70	72
Rear curb height	8	8	8	8	8
Rear curb width (loose bedded stalls)	6	6	6	6	6